

Anti-SZRD1 antibody



Catalog Number: 141188

Product name

Anti-SZRD1 antibody

Specificity

Human C1ORF144

Antibody description

Rabbit Polyclonal to Human SZRD1

Preparation

Produced in rabbits immunized with a synthetic peptide corresponding to the center region of the Human C1ORF144, and purified by antigen affinity chromatography.

Formulation

0.2 µm filtered solution in PBS

Storage

This antibody can be stored at 2°C-8°C for one month without detectable loss of activity. Antibody products are stable for twelve months from date of receipt when stored at -20°C to -80°C.

Preservative-Free.

Sodium azide is recommended to avoid contamination (final concentration 0.05%-0.1%). It is toxic to cells and should be disposed of properly. Avoid repeated freeze-thaw cycles.

Clonality

Polyclonal

Ig Type

Rabbit IgG

Applications

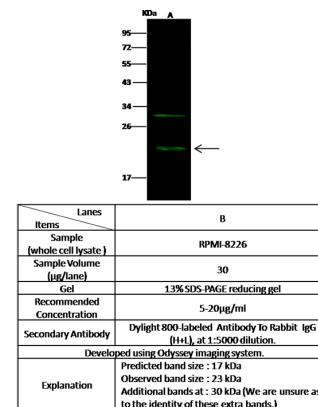
WB, IP

Dilutions

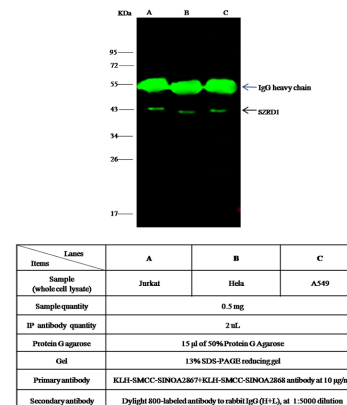
WB: 5-20 µg/ml

IP: 4-8 uL/mg of lysate

Validations



Human C1ORF144 Western blot (WB) 14945



Human C1ORF144 Immunoprecipitation(IP) 14946