

Anti-FES antibody

Catalog Number: 141185

Product name

Anti-FES antibody

Immunogen

[Human FES/Feline sarcoma oncogene \(His & GST Tag\) recombinant protein](#)

Specificity

Human FES/Feline sarcoma oncogene

Antibody description

Rabbit Polyclonal to Human FES

Preparation

Produced in rabbits immunized with purified, recombinant Human FES/Feline sarcoma oncogene. FES/Feline sarcoma oncogene specific IgG was purified by Human FES/Feline sarcoma oncogene affinity chromatography.

Formulation

0.2 µm filtered solution in PBS

Storage

This antibody can be stored at 2°C-8°C for one month without detectable loss of activity. Antibody products are stable for twelve months from date of receipt when stored at -20°C to -80°C.

Preservative-Free.

Sodium azide is recommended to avoid contamination (final concentration 0.05%-0.1%). It is toxic to cells and should be disposed of properly. Avoid repeated freeze-thaw cycles.

Clonality

Polyclonal

Ig Type

Rabbit IgG

Applications

ELISA, IHC-P, ICC/IF, IF

Dilutions

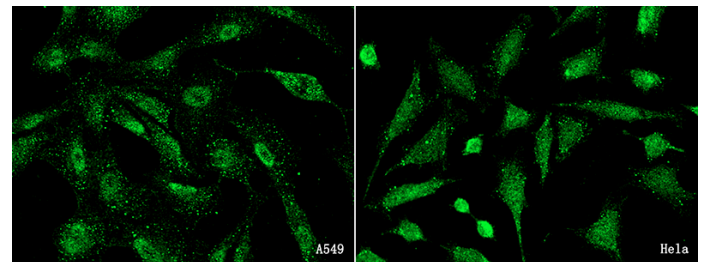
ELISA: 0.1-0.2 µg/mL

This antibody can be used at 0.1-0.2 µg/mL with the appropriate secondary reagents to detect Human FES/Feline sarcoma oncogene.

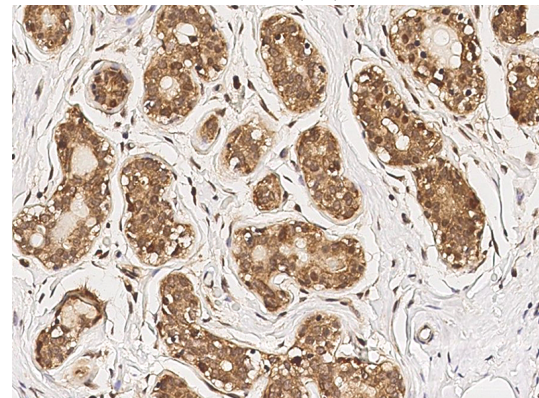
IHC-P: 0.1-2µg/mL

ICC/IF: 0.5-3µg/mL

Validations



Human FES/Feline sarcoma oncogene Immunofluorescence(IF) 15965



Human FES/Feline sarcoma oncogene Immunohistochemistry(IHC) 15964