

Anti-SET antibody



Catalog Number: 141170

Product name

Anti-SET antibody

Specificity

Human SET

Antibody description

Rabbit Polyclonal to Human SET

Preparation

Produced in rabbits immunized with a synthetic peptide corresponding to the N-terminus of the Human SET, and purified by antigen affinity chromatography.

Formulation

0.2 µm filtered solution in PBS

Storage

This antibody can be stored at 2°C-8°C for one month without detectable loss of activity. Antibody products are stable for twelve months from date of receipt when stored at -20°C to -80°C.

Preservative-Free.

Sodium azide is recommended to avoid contamination (final concentration 0.05%-0.1%). It is toxic to cells and should be disposed of properly. Avoid repeated freeze-thaw cycles.

Clonality

Polyclonal

Ig Type

Rabbit IgG

Applications

WB, IHC-P, ICC/IF, IF, IP

Dilutions

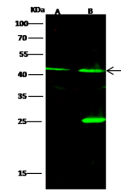
WB: 5-20 µg/ml

IHC-P: 0.1-2µg/mL

ICC/IF: 0.5-3µg/mL

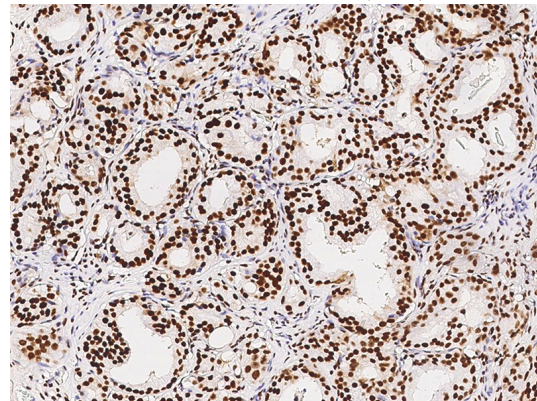
IP: 1-4 uL/mg of lysate

Validations

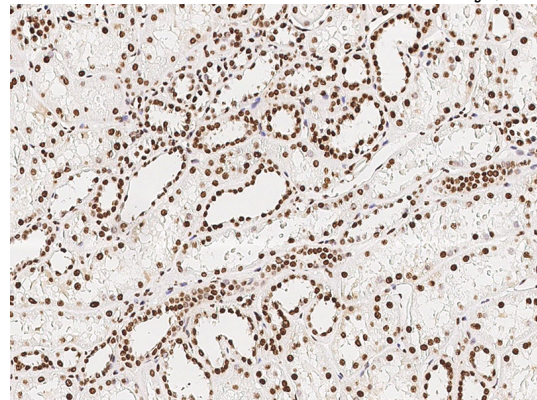


Items	Lanes	A	B
Sample (whole cell lysate)		293T	HeLa
Sample Volume (µg/lane)		30	30
Gel		13% SDS-PAGE reducing gel	
Recommended Concentration		5-20 µg/ml	
Secondary Antibody		DyLight 800 labeled Antibody to Rabbit IgG (1:1), at 1:5000 dilution.	
Explanation		Developed using Odyssey imaging system. Predicted band size : 33 kDa Observed band size : 42 kDa Additional bands at : 25 kDa (We are unsure as to the identity of these extra bands.)	

Human SET Western blot (WB) 15762



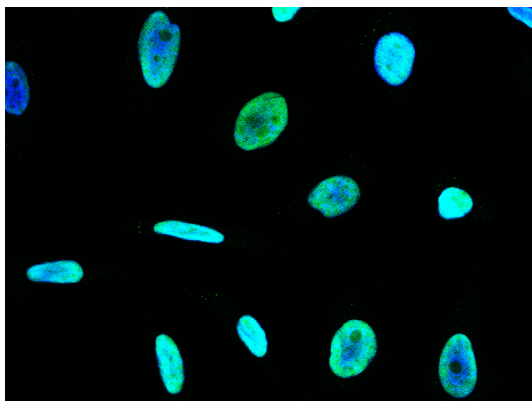
Human SET Immunohistochemistry(IHC) 15763



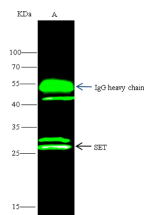
Human SET Immunohistochemistry(IHC) 15764

Anti-SET antibody

Catalog Number: 141170



Human SET Immunofluorescence(IF) 15765



Items	Lanes
Sample (whole cell lysate)	A
Sample quantity	250T
Sample quantity	0.5 mg
IP antibody quantity	4 µL
Protein G agarose	15 µl of 50% Protein G Agarose
Gel	13% SDS-PAGE reducing gel
Primary antibody	KLH-SMCC-sinoA7Z1+KLH-SMCC-sinoA1069 antibody at 10 µg/ml
Secondary antibody	DyLight 800-labeled antibody to rabbit IgG (H+L), at 1:5000 dilution

Human SET Immunoprecipitation(IP) 15766