

Product name

Rabbit IgG

Anti-PRKDC antibody

Applications**Specificity**

IHC-P, ICC/IF, IF

Human PRKDC

Dilutions

IHC-P: 0.1-2 μ g/mL

Antibody description

ICC/IF: 0.5-3 μ g/mL

Rabbit Polyclonal to Human PRKDC

Preparation

Produced in rabbits immunized with a synthetic peptide corresponding to the C-terminus of the Human PRKDC, and purified by antigen affinity chromatography.

Formulation

0.2 μ m filtered solution in PBS

Storage

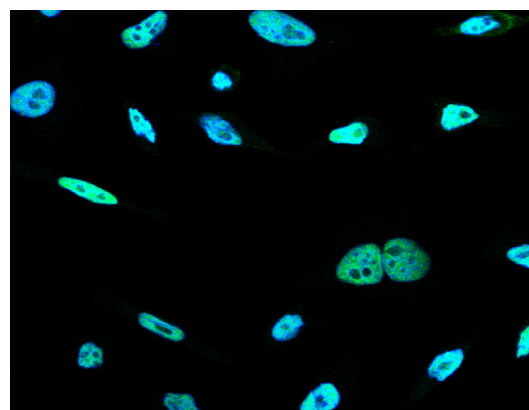
This antibody can be stored at 2°C-8°C for one month without detectable loss of activity. Antibody products are stable for twelve months from date of receipt when stored at -20°C to -80°C.

Preservative-Free.

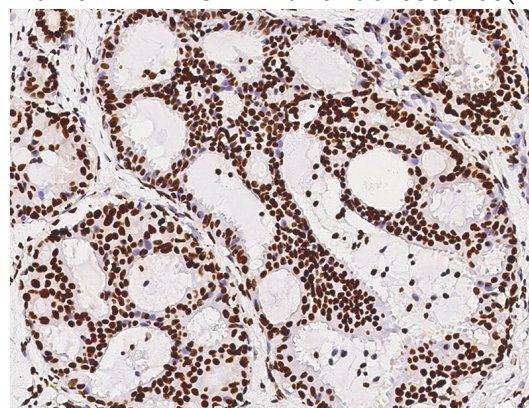
Sodium azide is recommended to avoid contamination (final concentration 0.05%-0.1%). It is toxic to cells and should be disposed of properly. Avoid repeated freeze-thaw cycles.

Clonality

Polyclonal

Ig Type**Validations**

Human PRKDC Immunofluorescence(IF) 15710



Human PRKDC Immunohistochemistry(IHC) 15709