

# Anti-ELAVL1 antibody



Catalog Number: 141166

## Product name

Anti-ELAVL1 antibody

ICC/IF: 0.5-3 µg/mL

IP: 1-4 uL/mg of lysate

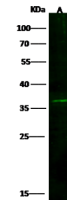
## Specificity

Human ELAVL1

## Validations

## Antibody description

Rabbit Polyclonal to Human ELAVL1



Lanes		A
Items	Sample (whole cell lysate)	Jurkat
Sample Volume (µg/lane)		30
Gel		13% SDS-PAGE reducing gel
Recommended Concentration		10-30 µg/ml
Secondary Antibody		Dylight 800 labeled Antibody to Rabbit IgG (H+L), at 1:5000 dilution.
Developed using Odyssey imaging system.		
Explanation		Predicted band size : 36 kDa Observed band size : 36 kDa

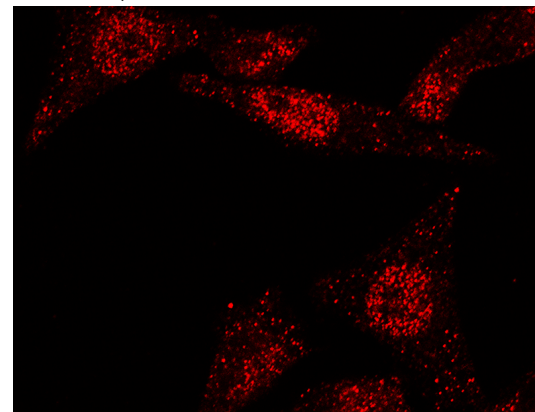
## Preparation

Produced in rabbits immunized with a synthetic peptide corresponding to the N-terminus of the Human ELAVL1, and purified by antigen affinity chromatography.

ELAVL1 Antibody, Rabbit PAb, Antigen Affinity Purified, Western blot

## Formulation

0.2 µm filtered solution in PBS



## Storage

This antibody can be stored at 2°C-8°C for one month without detectable loss of activity. Antibody products are stable for twelve months from date of receipt when stored at -20°C to -80°C.

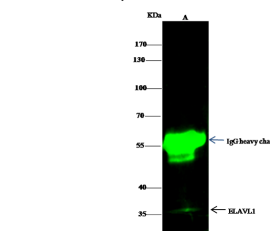
Preservative-Free.

Sodium azide is recommended to avoid contamination (final concentration 0.05%-0.1%). It is toxic to cells and should be disposed of properly. Avoid repeated freeze-thaw cycles.

ELAVL1 Antibody, Rabbit PAb, Antigen Affinity Purified, Immunofluorescence

## Clonality

Polyclonal



Lanes		A
Items	Sample (whole cell lysate)	293T
Sample quantity		0.5 mg
IP antibody quantity		2 µg
Immunomagnetic beads Protein G		60 µg
Gel		13% SDS-PAGE reducing gel
Primary antibody		KLAF-SMCC-SINO A002 antibody at 10 µg/ml
Secondary antibody		Dylight 800 labeled antibody to mouse IgG (H+L), at 1:5000 dilution

## Ig Type

Rabbit IgG

## Applications

WB, ICC/IF, IF, IP

ELAVL1 Antibody, Rabbit PAb, Antigen Affinity Purified, Immunoprecipitation

## Dilutions

WB: 10-30 µg/ml