

# Anti-NR3C2 antibody



Catalog Number: 141109

## Product name

Anti-NR3C2 antibody

## Specificity

Human NR3C2

## Antibody description

Rabbit Polyclonal to Human NR3C2

## Preparation

Produced in rabbits immunized with a synthetic peptide corresponding to the C-terminus of the Human NR3C2, and purified by antigen affinity chromatography.

## Formulation

0.2  $\mu$ m filtered solution in PBS

## Storage

This antibody can be stored at 2°C-8°C for one month without detectable loss of activity. Antibody products are stable for twelve months from date of receipt when stored at -20°C to -80°C.

Preservative-Free.

Sodium azide is recommended to avoid contamination (final concentration 0.05%-0.1%). It is toxic to cells and should be disposed of properly. Avoid repeated freeze-thaw cycles.

## Clonality

Polyclonal

## Ig Type

Rabbit IgG

## Applications

WB, ICC/IF, IF, IP

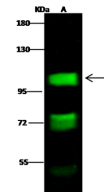
## Dilutions

WB: 5-20  $\mu$ g/ml

ICC/IF: 0.5-3 $\mu$ g/mL

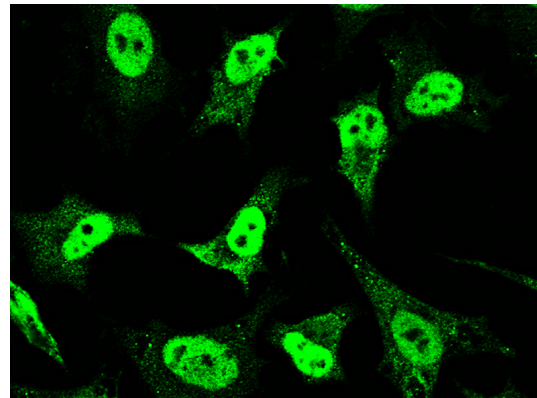
IP: 1-4  $\mu$ l/mg of lysate

## Validations

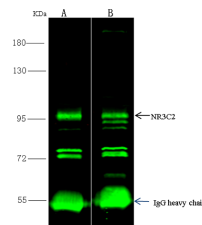


Items	Lanes
Sample (whole cell lysate)	MCF7
Sample Volume ( $\mu$ g/lane)	30
Gel	7.5% SDS-PAGE reducing gel
Recommended Concentration	5-20 $\mu$ g/ml
Secondary Antibody	Dylight 800 labeled Antibody to Rabbit IgG (H+L) at 1:5000 dilution
Developed using Odyssey imaging system.	
Explanation	Predicted band size : 107 kDa Observed band size : 107 kDa Additional bands at : 50 kDa and 72 kDa (We are unsure as to the identity of these extra bands.)

## Human NR3C2 Western blot (WB) 15696



## Human NR3C2 Immunofluorescence(IF) 15697



Items	Lanes
Sample (whole cell lysate)	HeLa 293T
Sample quantity	0.5 mg
IP antibody quantity	4 $\mu$ l.
Protein G agarose	15 $\mu$ l of 50% Protein G Agarose
Gel	7.5% SDS-PAGE reducing gel
Primary antibody	KLH-SMCC-SINO1142+KLH-SMCC-SINO1192 antibody at 10 $\mu$ g/ml
Secondary antibody	Dylight 800-labeled antibody to rabbit IgG (H+L), at 1:5000 dilution

## Human NR3C2 Immunoprecipitation(IP) 15698