

Anti-IDI2 antibody



Catalog Number: 141089

Product name

Anti-IDI2 antibody

Immunogen

[Human IDI2/IPPI2 \(His Tag\) recombinant protein](#)

Specificity

Human IDI2 / IPPI2

Antibody description

Rabbit Polyclonal to Human IDI2

Preparation

Produced in rabbits immunized with purified, recombinant Human IDI2 / IPPI2 . IDI2 / IPPI2 specific IgG was purified by Human IDI2 / IPPI2 affinity chromatography.

Formulation

0.2 µm filtered solution in PBS

Storage

This antibody can be stored at 2°C-8°C for one month without detectable loss of activity. Antibody products are stable for twelve months from date of receipt when stored at -20°C to -80°C.

Preservative-Free.

Sodium azide is recommended to avoid contamination (final concentration 0.05%-0.1%). It is toxic to cells and should be disposed of properly. Avoid repeated freeze-thaw cycles.

Clonality

Polyclonal

Ig Type

Rabbit IgG

Applications

WB, ELISA, IHC-P, IP

Dilutions

WB: 5-20 µg/ml

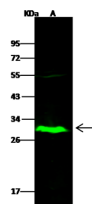
ELISA: 0.1-0.2 µg/ml

This antibody can be used at 0.1-0.2 µg/ml with the appropriate secondary reagents to detect Human IDI2 / IPPI2.

IHC-P: 0.1-2 µg/mL

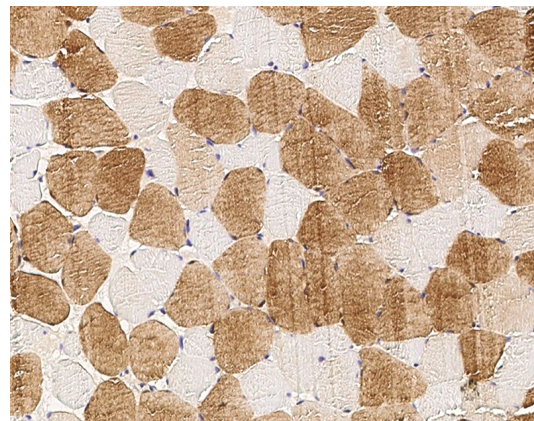
IP: 4-8 µl/mg of lysate

Validations



Lanes	A
Sample (whole cell lysate)	HepG2
Sample Volume (µg/lane)	30
Gel	13% SDS-PAGE reducing gel
Recommended Concentration	5-20 µg/ml
Secondary Antibody	Dylight 800-labeled Antibody to Rabbit IgG (H+L), at 1:5000 dilution.
Developed using Odyssey imaging system.	
Explanation	Predicted band size : 27 kDa Observed band size : 30 kDa Additional bands at : 55 kDa (We are unsure as to the identity of these extra bands.)

IDI2 / IPPI2 Antibody, Rabbit PAb, Antigen Affinity Purified, Western blot

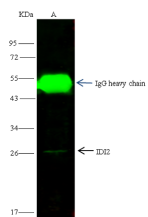


IDI2 / IPPI2 Antibody, Rabbit PAb, Antigen Affinity Purified, Immunohistochemistry

Anti-IDI2 antibody



Catalog Number: 141089



IDI2 / IPPI2 Antibody, Rabbit PAb, Antigen Affinity Purified, Immunoprecipitation

Lanes	A
Items	
Sample (whole cell lysate)	HeLa
Sample quantity	0.5 mg
IP antibody quantity	4 μ L
Protein G agarose	15 μ l of 50% Protein G agarose
Gel	13% SDS-PAGE reducing gel
Primary antibody	His-EK-IDI2 antibody at 10 μ g/ml
Secondary antibody	DyLight 800-labeled antibody to rabbit IgG (H+L), at 1:5000 dilution