

Anti-VPREB1 antibody



Catalog Number: 141081

Product name

Anti-VPREB1 antibody

Specificity

Mouse VPREB1

Antibody description

Rabbit Polyclonal to Mouse VPREB1

Preparation

Produced in rabbits immunized with a synthetic peptide corresponding to the center region of the Mouse VPREB1, and purified by antigen affinity chromatography.

Formulation

0.2 µm filtered solution in PBS

Storage

This antibody can be stored at 2°C-8°C for one month without detectable loss of activity. Antibody products are stable for twelve months from date of receipt when stored at -20°C to -80°C.

Preservative-Free.

Sodium azide is recommended to avoid contamination (final concentration 0.05%-0.1%). It is toxic to cells and should be disposed of

properly. Avoid repeated freeze-thaw cycles.

Clonality

Polyclonal

Ig Type

Rabbit IgG

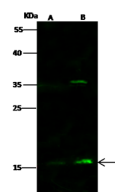
Applications

WB

Dilutions

WB: 5-20 µg/ml

Validations



Lanes	A	B
Sample (whole cell lysate)	HepG2	THP1
Sample Volume (µg/lane)	30	30
Gel	13% SDS-PAGE reducing gel	
Recommended Concentration	5-20 µg/ml	
Secondary Antibody	Dylight 800 labeled Antibody to Rabbit IgG (1:1), at 1:5000 dilution.	
Developed using Odyssey imaging system.		
Explanation	Predicted band size : 17 kDa Observed band size : 17 kDa Additional bands at : 36 kDa (We are unsure as to the identity of these extra bands.)	

VPREB1 Antibody, Rabbit PAb, Antigen Affinity Purified, Western blot