

SH3GL2 Antibody (C-term)



Catalog Number: 134879

General Information

Product name:

SH3GL2 Antibody (C-term)

Immunogen:

Applications:

WB, ELISA

Specificity:

Human, Mouse, Rat

Antibody description:

Purified Rabbit Polyclonal Antibody (Pab)

Properties

Preparation:

This SH3GL2 antibody is generated from a rabbit immunized with a KLH conjugated synthetic peptide between 245-279 amino acids from the C-terminal region of human SH3GL2.

Formulation:

Storage:

Short term 4°C, long term aliquot and store at -20°C, avoid freeze thaw cycles. Store undiluted.

Clonality:

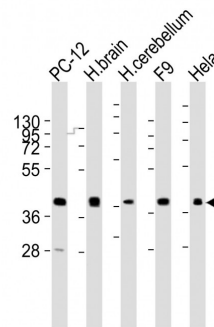
polyclonal

Ig Type:Rabbit IgG

Applications

WB: 1:2000

Validations



All lanes : Anti-SH3GL2 Antibody (C-term) at 1:2000 dilution Lane 1: PC-12 whole cell lysates Lane 2: human brain lysates Lane 3: human cerebellum lysates Lane 4: F9 whole cell lysates Lane 5: HeLa whole cell lysates Lysates/proteins at 20 µg per lane. Secondary Goat Anti-Rabbit IgG, (H+L), Peroxidase conjugated at 1/10000 dilution Predicted band size : 40 kDa Blocking/Dilution buffer: 5% NFDM/TBST.