

# ZHX1 antibody

Catalog Number: 117052

## Product name

ZHX1 antibody

IP: 1:200-1:2000

IHC: 1:20-1:200

## Specificity

Human, Mouse, Rat; other species not tested.

## Antibody description

ZHX1 Rabbit Polyclonal antibody. Positive IHC detected in human cervical cancer tissue. Positive WB detected in HeLa cells, HEK-293 cells, mouse heart tissue, mouse kidney tissue. Positive IP detected in HEK-293 cells. Observed molecular weight by Western-blot: 100-120 kDa

## Preparation

This antibody was obtained by immunization of ZHX1 recombinant protein (Accession Number: NM\_007222). Purification method: Antigen affinity purified.

## Formulation

PBS with 0.02% sodium azide and 50% glycerol pH 7.3.

## Storage

Store at -20°C. DO NOT ALIQUOT

## Clonality

Polyclonal

## Ig Type

Rabbit IgG

## Applications

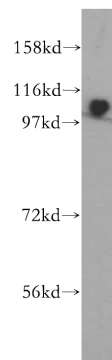
ELISA, WB, IHC, IP

## Dilutions

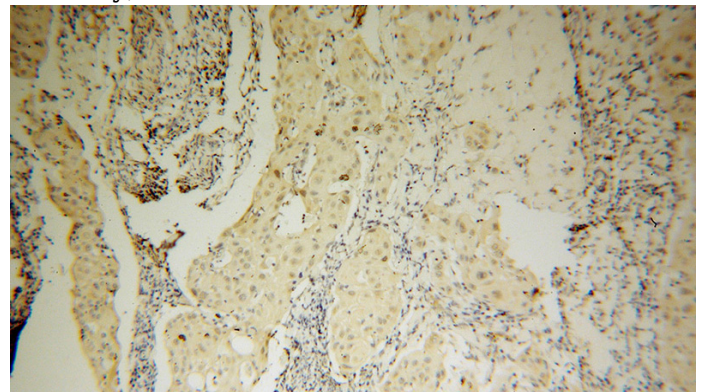
Recommended Dilution:

WB: 1:500-1:5000

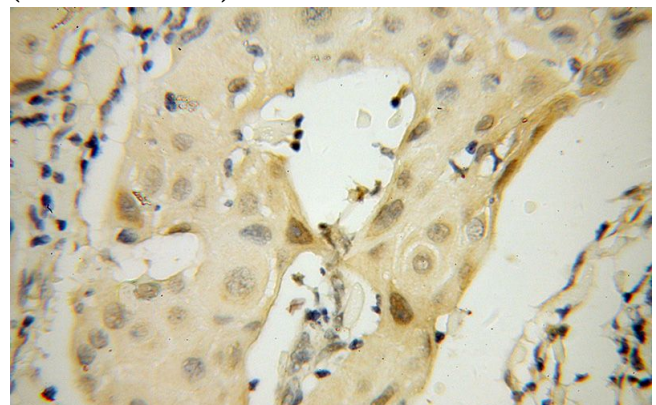
## Validations



HeLa cells were subjected to SDS PAGE followed by western blot with Catalog No:117052(ZHX1 antibody) at dilution of 1:500



Immunohistochemical of paraffin-embedded human cervical cancer using Catalog No:117052(ZHX1 antibody) at dilution of 1:100 (under 10x lens)



Immunohistochemical of paraffin-embedded

# ZHX1 antibody

Catalog Number: 117052

---

human cervical cancer using Catalog No:117052(ZHX1 antibody) at dilution of 1:100 (under 40x lens)

IP Result of anti-ZHX1 (IP:Catalog No:117052, 4ug; Detection:Catalog No:117052 1:500) with HEK-293 cells lysate 3200ug.

