

ZFP36 antibody

Catalog Number: 117040

Product name

ZFP36 antibody

IHC: 1:20-1:200

IF: 1:10-1:100

Specificity

Human, Mouse, Rat; other species not tested.

Antibody description

ZFP36 Rabbit Polyclonal antibody. Positive WB detected in mouse lung tissue, A549 cells. Positive IF detected in HepG2 cells. Positive IHC detected in human breast cancer tissue, human bladder tissue. Observed molecular weight by Western-blot: 40-45 kDa

Preparation

This antibody was obtained by immunization of ZFP36 recombinant protein (Accession Number: NM_003407). Purification method: Antigen affinity purified.

Formulation

PBS with 0.02% sodium azide and 50% glycerol pH 7.3.

Storage

Store at -20°C. DO NOT ALIQUOT

Clonality

Polyclonal

Ig Type

Rabbit IgG

Applications

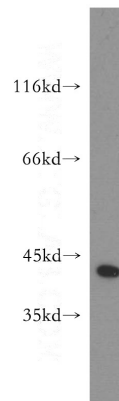
ELISA, WB, IF, IHC

Dilutions

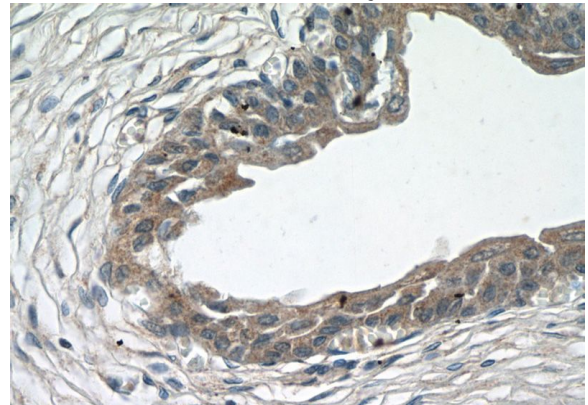
Recommended Dilution:

WB: 1:200-1:2000

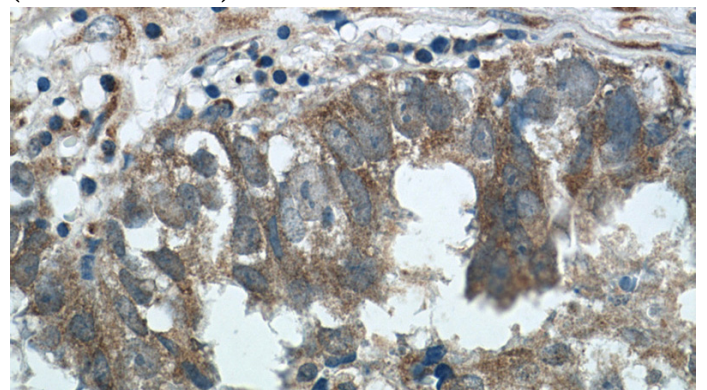
Validations



mouse lung tissue were subjected to SDS PAGE followed by western blot with Catalog No:117040(ZFP36 antibody) at dilution of 1:300



Immunohistochemistry of paraffin-embedded human bladder tissue slide using Catalog No:117040(ZFP36 Antibody) at dilution of 1:50 (under 40x lens)

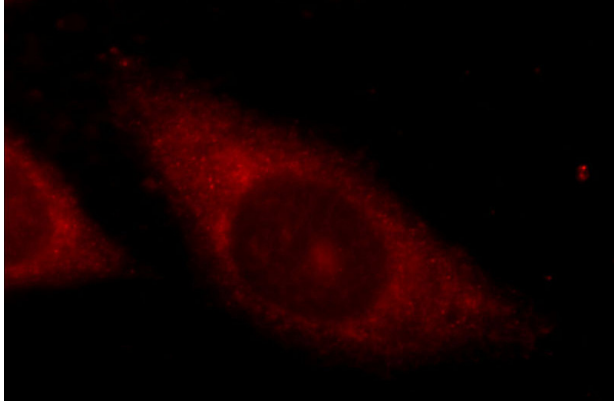


Immunohistochemistry of paraffin-embedded

ZFP36 antibody

Catalog Number: 117040

human breast cancer tissue slide using Catalog No:117040(ZFP36 Antibody) at dilution of 1:50 (under 40x lens)



Immunofluorescent analysis of HepG2 cells using Catalog No:117040(ZFP36 Antibody) at dilution of 1:25 and Rhodamine-Goat anti-Rabbit IgG