

WWC2 antibody

Catalog Number: 116976

Product name

WWC2 antibody

IHC: 1:20-1:200

IF: 1:20-1:200

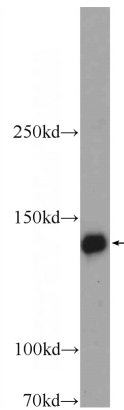
Specificity

Human, Mouse; other species not tested.

Validations

Antibody description

WWC2 Rabbit Polyclonal antibody. Positive IHC detected in human kidney tissue, human testis tissue. Positive IF detected in HEK-293 cells. Positive WB detected in mouse brain tissue, HepG2 cells. Observed molecular weight by Western-blot: 134 kDa



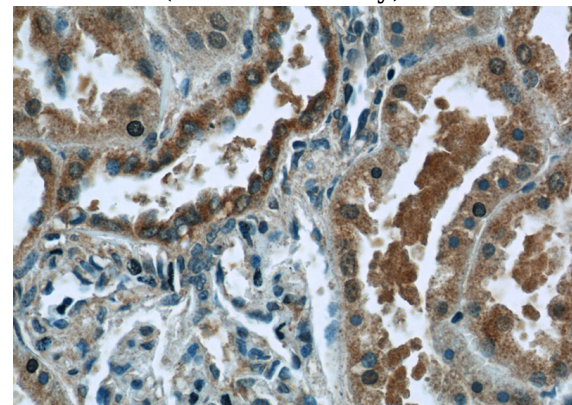
Preparation

This antibody was obtained by immunization of WWC2 recombinant protein (Accession Number: BC017957). Purification method: Antigen affinity purified.

mouse brain tissue were subjected to SDS PAGE followed by western blot with Catalog No:116976(WWC2 Antibody) at dilution of 1:600

Formulation

PBS with 0.1% sodium azide and 50% glycerol pH 7.3.



Storage

Store at -20°C. DO NOT ALIQUOT

Clonality

Polyclonal

Immunohistochemistry of paraffin-embedded human kidney tissue slide using Catalog No:116976(WWC2 Antibody) at dilution of 1:50 (under 40x lens)

Ig Type

Rabbit IgG

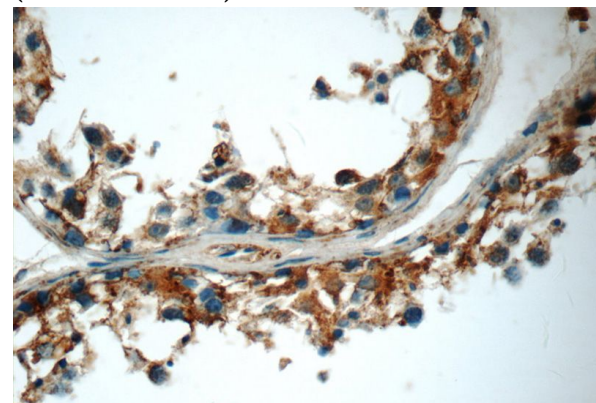
Applications

ELISA, WB, IHC, IF

Dilutions

Recommended Dilution:

WB: 1:200-1:2000

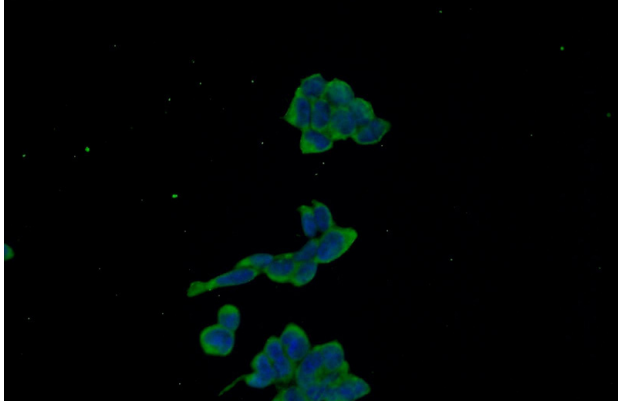


Immunohistochemistry of paraffin-embedded

WWC2 antibody

Catalog Number: 116976

human testis tissue slide using Catalog No:116976(WWC2 Antibody) at dilution of 1:50 (under 40x lens)



Immunofluorescent analysis of HEK-293 cells using Catalog No:116976(WWC2 Antibody) at dilution of 1:50 and Alexa Fluor 488-conjugated AffiniPure Goat Anti-Rabbit IgG(H+L)