

ZCCHC6 antibody

Catalog Number: 116934

Product name

ZCCHC6 antibody

Specificity

Human, Mouse, Rat; other species not tested.

Antibody description

ZCCHC6 Rabbit Polyclonal antibody. Positive IP detected in HeLa cells. Positive WB detected in PC-3 cells, HeLa cells, MCF-7 cells, mouse brain tissue. Observed molecular weight by Western-blot: 171 kDa

Preparation

This antibody was obtained by immunization of ZCCHC6 recombinant protein (Accession Number: BC032456). Purification method: Antigen affinity purified.

Formulation

PBS with 0.1% sodium azide and 50% glycerol pH 7.3.

Storage

Store at -20°C. DO NOT ALIQUOT

Clonality

Polyclonal

Ig Type

Rabbit IgG

Applications

ELISA, WB, IP

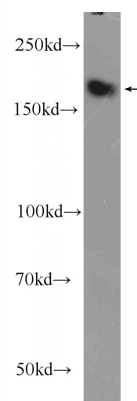
Dilutions

Recommended Dilution:

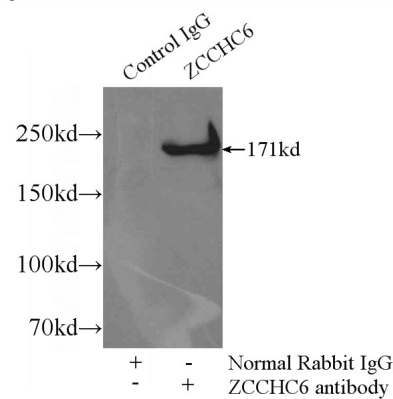
WB: 1:500-1:5000

IP: 1:500-1:5000

Validations



PC-3 cells were subjected to SDS PAGE followed by western blot with Catalog No:116934(ZCCHC6 Antibody) at dilution of 1:1000



IP Result of anti-ZCCHC6 (IP:Catalog No:116934, 4ug; Detection:Catalog No:116934 1:1000) with HeLa cells lysate 1800ug.