

YIPF4 antibody

Catalog Number: 116885

Product name

YIPF4 antibody

IHC: 1:20-1:200

IF: 1:10-1:100

Specificity

human, mouse, rat; other species not tested.

Antibody description

YIPF4 Rabbit Polyclonal antibody. Positive IHC detected in human endometrial cancer. Positive IF detected in HepG2. Positive WB detected in Jurkat cells, HeLa cells. Observed molecular weight by Western-blot: 27kd

Preparation

This antibody was obtained by immunization of YIPF4 recombinant protein (Accession Number: NM_032312). Purification method: Antigen affinity purified.

Formulation

PBS with 0.02% sodium azide and 50% glycerol pH 7.3.

Storage

Store at -20°C. DO NOT ALIQUOT

Clonality

Polyclonal

Ig Type

Rabbit IgG

Applications

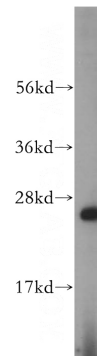
ELISA, WB, IHC, IF

Dilutions

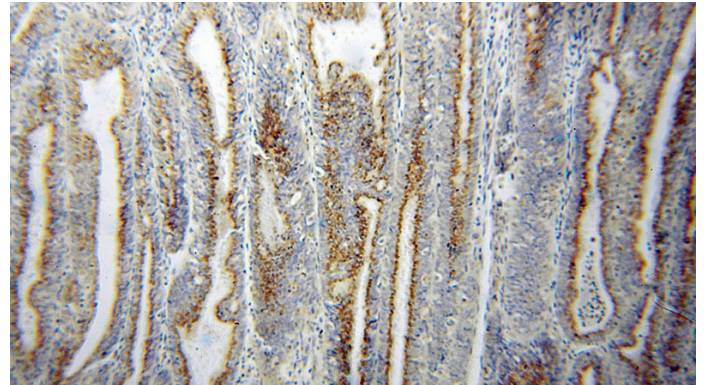
Recommended Dilution:

WB: 1:500-1:5000

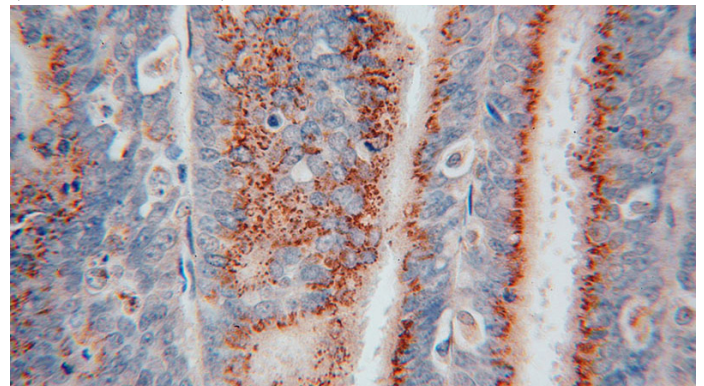
Validations



Jurkat cells were subjected to SDS PAGE followed by western blot with Catalog No:116885(YIPF4 antibody) at dilution of 1:500



Immunohistochemical of paraffin-embedded human endometrial cancer using Catalog No:116885(YIPF4 antibody) at dilution of 1:50 (under 10x lens)

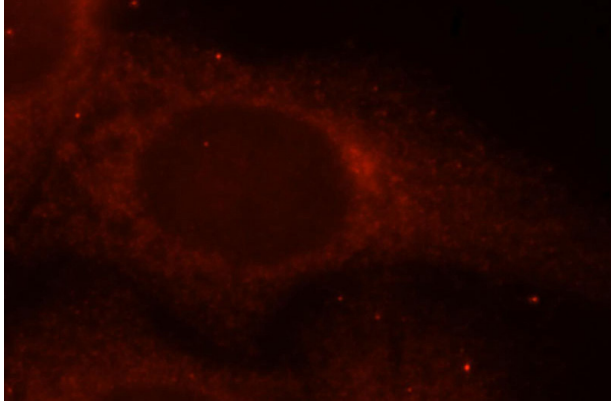


Immunohistochemical of paraffin-embedded

YIPF4 antibody

Catalog Number: 116885

human endometrial cancer using Catalog No:116885(YIPF4 antibody) at dilution of 1:50 (under 40x lens)



Immunofluorescent analysis of HepG2 cells, using YIPF4 antibody Catalog No:116885 at 1:25 dilution and Rhodamine-labeled goat anti-rabbit IgG (red).