

# YES1-Specific antibody



Catalog Number: 116884

## Product name

YES1-Specific antibody

IP: 1:200-1:1000

IHC: 1:20-1:200

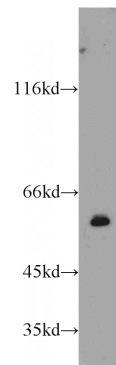
## Specificity

Human, Mouse, Rat; other species not tested.

## Antibody description

YES1-Specific Rabbit Polyclonal antibody. Positive IP detected in human placenta tissue. Positive WB detected in human placenta tissue, HeLa cells. Positive IHC detected in human colon tissue. Observed molecular weight by Western-blot: 50-60 kDa

## Validations



## Preparation

This antibody was obtained by immunization of Peptide (Accession Number: NM\_005433). Purification method: Antigen affinity purified.

human placenta tissue were subjected to SDS PAGE followed by western blot with Catalog No:116884(YES1-Specific antibody) at dilution of

## Formulation

PBS with 0.02% sodium azide and 50% glycerol pH 7.3.

## Storage

Store at -20°C. DO NOT ALIQUOT

## Clonality

Polyclonal

## Ig Type

Rabbit IgG

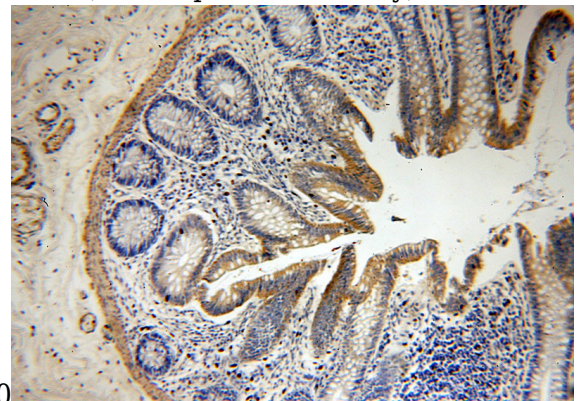
## Applications

ELISA, WB, IHC, IP

## Dilutions

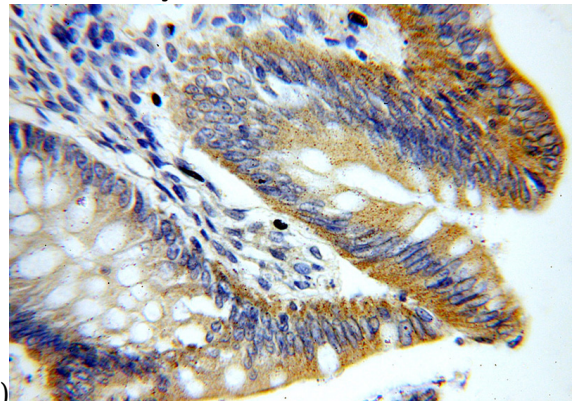
Recommended Dilution:

WB: 1:200-1:2000



1:300

Immunohistochemical of paraffin-embedded human colon using Catalog No:116884(YES1-Specific antibody) at dilution of 1:50 (under 10x



lens)

Immunohistochemical of paraffin-embedded

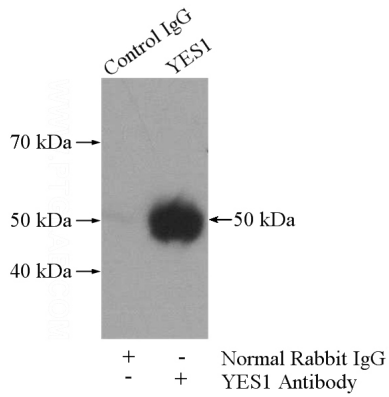
# YES1-Specific antibody

Catalog Number: 116884

---

human colon using Catalog No:116884(YES1-Specific antibody) at dilution of 1:50 (under 40x

IP Result of anti-YES1-Specific (IP:Catalog No:116884, 4ug; Detection:Catalog No:116884 1:300) with human placenta tissue lysate 1520ug.



lens)