

XRCC1 antibody



Catalog Number: 116872

Product name

XRCC1 antibody

Immunogen

[Human XRCC1 Recombinant protein \(His tag\)](#)

Specificity

Human; other species not tested.

Antibody description

XRCC1 Rabbit Polyclonal antibody. Positive WB detected in K-562 cells, HEK-293 cells, HeLa cells, Jurkat cells. Observed molecular weight by Western-blot: 80-90 kDa

Preparation

This antibody was obtained by immunization of XRCC1 recombinant protein (Accession Number: NM_006297). Purification method: Antigen affinity purified.

Formulation

PBS with 0.1% sodium azide and 50% glycerol pH 7.3.

Storage

Store at -20°C. DO NOT ALIQUOT

Clonality

Polyclonal

Ig Type

Rabbit IgG

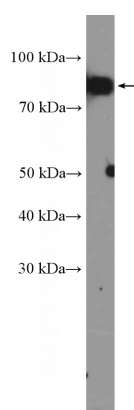
Applications

ELISA, WB

Dilutions

Recommended Dilution:
WB: 1:200-1:2000

Validations



K-562 cells were subjected to SDS PAGE followed by western blot with Catalog No:116872(XRCC1 Antibody) at dilution of 1:600