

# WDR45 antibody

Catalog Number: 116868

## Product name

WDR45 antibody

IF: 1:10-1:100

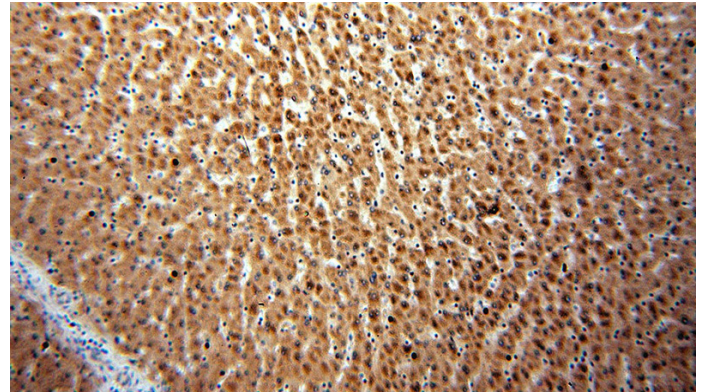
## Specificity

Human; other species not tested.

## Validations

## Antibody description

WDR45 Rabbit Polyclonal antibody. Positive WB detected in Transfected HEK-293 cells. Positive IHC detected in human liver tissue. Positive IF detected in Hela cells.



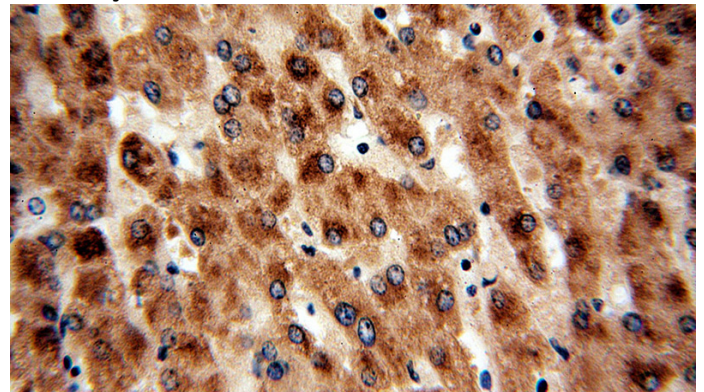
## Preparation

This antibody was obtained by immunization of WDR45 recombinant protein (Accession Number: NM\_001029896). Purification method: Antigen affinity purified.

Immunohistochemical of paraffin-embedded human liver using Catalog No:116868(WDR45 antibody) at dilution of 1:50 (under 10x lens)

## Formulation

PBS with 0.02% sodium azide and 50% glycerol pH 7.3.



## Storage

Store at -20°C. DO NOT ALIQUOT

Immunohistochemical of paraffin-embedded human liver using Catalog No:116868(WDR45 antibody) at dilution of 1:50 (under 40x lens)

## Clonality

Polyclonal

## Ig Type

Rabbit IgG

## Applications

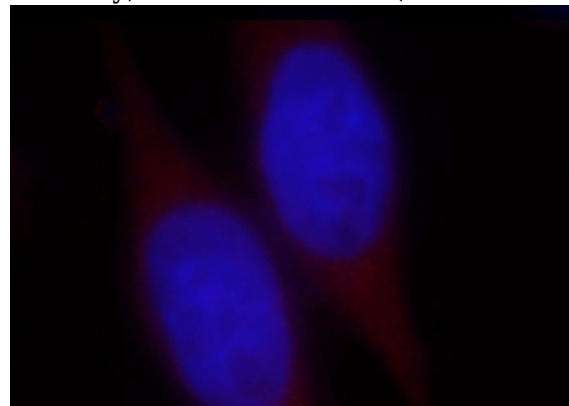
ELISA, IHC, IF, WB

## Dilutions

Recommended Dilution:

WB: 1:500-1:5000

IHC: 1:20-1:200



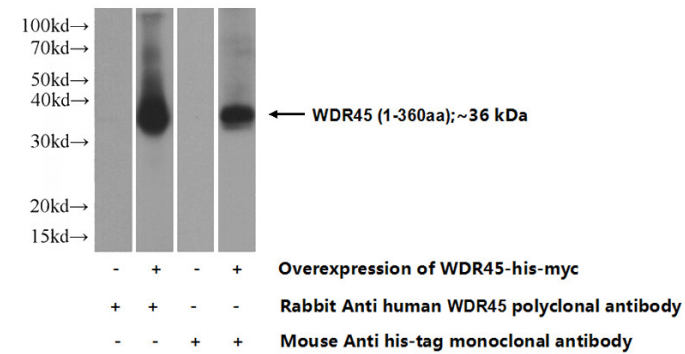
Immunofluorescent analysis of Hela cells, using WDR45 antibody Catalog No:116868 at 1:25 dilution and Rhodamine-labeled goat anti-rabbit IgG (red). Blue pseudocolor = DAPI (fluorescent

# WDR45 antibody

Catalog Number: 116868

---

DNA dye).



Transfected HEK-293 cells were subjected to SDS PAGE followed by western blot with Catalog No:116868(WDR45 Antibody) at dilution of 1:1000