

# WDR21C antibody



Catalog Number: 116860

---

## Product name

WDR21C antibody

## Specificity

Human, Mouse, Rat; other species not tested.

## Antibody description

WDR21C Rabbit Polyclonal antibody. Positive WB detected in HEK-293 cells, MCF7 cells. Observed molecular weight by Western-blot: 44-50 kDa

## Preparation

This antibody was obtained by immunization of WDR21C recombinant protein (Accession Number: NM\_152418). Purification method: Antigen affinity purified.

## Formulation

PBS with 0.02% sodium azide and 50% glycerol pH 7.3.

## Storage

Store at -20°C. DO NOT ALIQUOT

## Clonality

Polyclonal

## Ig Type

Rabbit IgG

## Applications

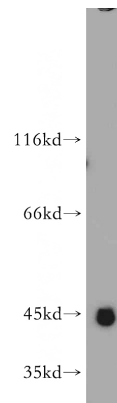
ELISA, WB

## Dilutions

Recommended Dilution:

WB: 1:200-1:2000

## Validations



HEK-293 cells were subjected to SDS PAGE followed by western blot with Catalog No:116860(WDR21C antibody) at dilution of 1:500