

WBP2 antibody

Catalog Number: 116847

Product name

WBP2 antibody

IHC: 1:20-1:200

IF: 1:10-1:100

Specificity

Human, Mouse, Rat; other species not tested.

Antibody description

WBP2 Rabbit Polyclonal antibody. Positive WB detected in mouse brain tissue, A375 cells. Positive IHC detected in human testis tissue, human gliomas tissue. Positive IF detected in A375 cells. Observed molecular weight by Western-blot: 30-40 kDa

Preparation

This antibody was obtained by immunization of WBP2 recombinant protein (Accession Number: NM_001348170). Purification method: Antigen affinity purified.

Formulation

PBS with 0.1% sodium azide and 50% glycerol pH 7.3.

Storage

Store at -20°C. DO NOT ALIQUOT

Clonality

Polyclonal

Ig Type

Rabbit IgG

Applications

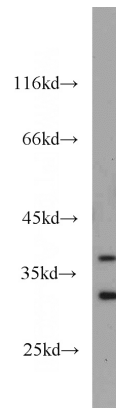
ELISA, WB, IHC, IF

Dilutions

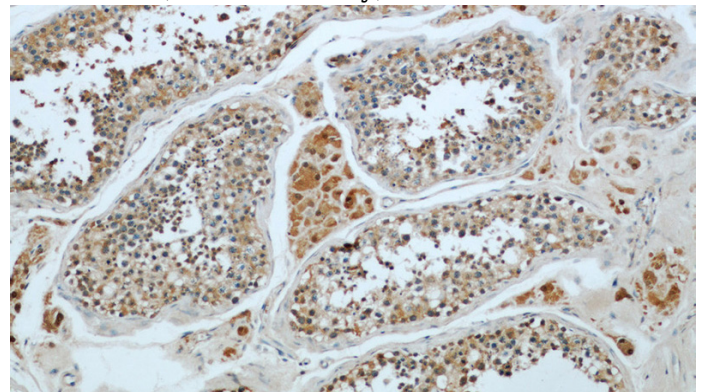
Recommended Dilution:

WB: 1:500-1:5000

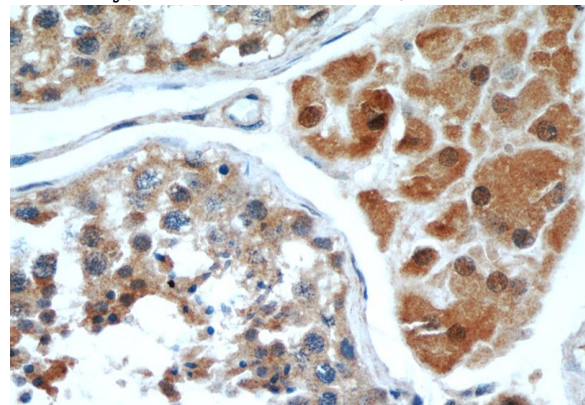
Validations



mouse brain tissue were subjected to SDS PAGE followed by western blot with Catalog No:116847(WBP2 antibody) at dilution of 1:1000



Immunohistochemical of paraffin-embedded human testis using Catalog No:116847(WBP2 antibody) at dilution of 1:50 (under 10x lens)

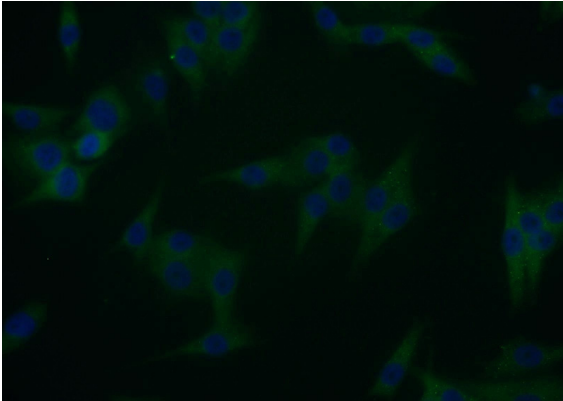


Immunohistochemical of paraffin-embedded human testis using Catalog No:116847(WBP2 antibody) at dilution of 1:50 (under 10x lens)

WBP2 antibody

Catalog Number: 116847

antibody) at dilution of 1:50 (under 40x lens)



Immunofluorescent analysis of A375 cells using Catalog No:116847(WBP2 Antibody) at dilution of 1:25 and Alexa Fluor 488-conjugated AffiniPure Goat Anti-Rabbit IgG(H+L)