

WASF4-Specific antibody



Catalog Number: 116842

Product name

WASF4-Specific antibody

Specificity

Human, Mouse; other species not tested.

Antibody description

WASF4-Specific Rabbit Polyclonal antibody.
Positive WB detected in mouse brain tissue.
Positive IF detected in HepG2 cells. Observed
molecular weight by Western-blot: 68kd

Preparation

This antibody was obtained by immunization of
Peptide (Accession Number: Q8IV90). Purification
method: Antigen affinity purified.

Formulation

PBS with 0.02% sodium azide and 50% glycerol
pH 7.3.

Storage

Store at -20°C. DO NOT ALIQUOT

Clonality

Polyclonal

Ig Type

Rabbit IgG

Applications

ELISA, WB, IF

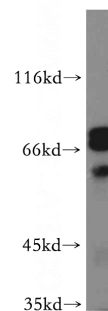
Dilutions

Recommended Dilution:

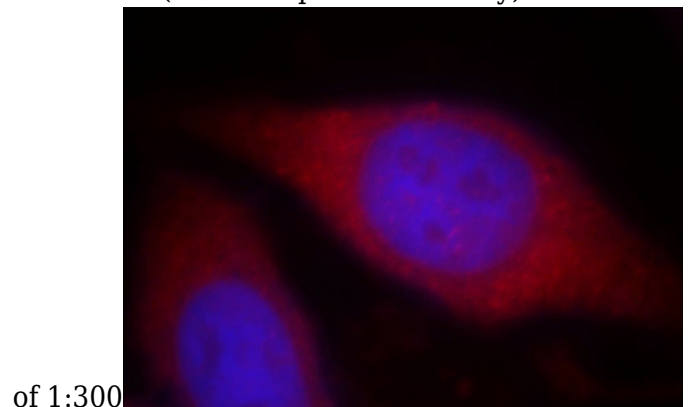
WB: 1:500-1:5000

IF: 1:10-1:100

Validations



mouse brain tissue were subjected to SDS PAGE
followed by western blot with Catalog
No:116842(WASF4-Specific antibody) at dilution



of 1:300
Immunofluorescent analysis of HepG2 cells, using
WASF4 antibody Catalog No:116842 at 1:25
dilution and Rhodamine-labeled goat anti-rabbit
IgG (red). Blue pseudocolor = DAPI (fluorescent
DNA dye).