

# WIT1 antibody



Catalog Number: 116832

## Product name

WIT1 antibody

## Specificity

Human; other species not tested.

## Antibody description

WIT1 Rabbit Polyclonal antibody. Positive IHC detected in human ovary tumor tissue, human nephroblastoma tissue.

## Preparation

This antibody was obtained by immunization of WIT1 recombinant protein (Accession Number: BC002734). Purification method: Antigen affinity purified.

## Formulation

PBS with 0.1% sodium azide and 50% glycerol pH 7.3.

## Storage

Store at -20°C. DO NOT ALIQUOT

## Clonality

Polyclonal

## Ig Type

Rabbit IgG

## Applications

ELISA, IHC

## Dilutions

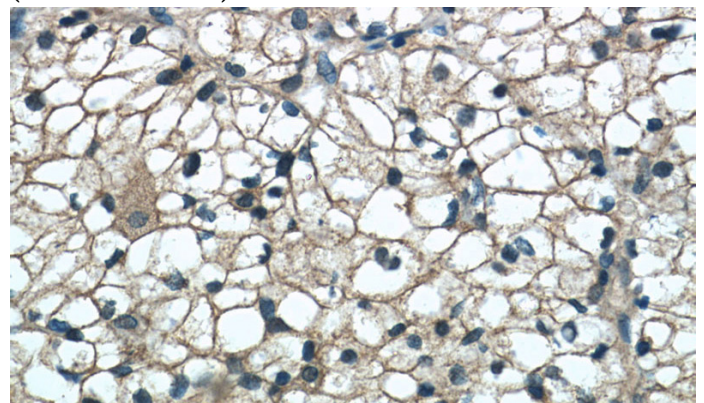
Recommended Dilution:

IHC: 1:20-1:200

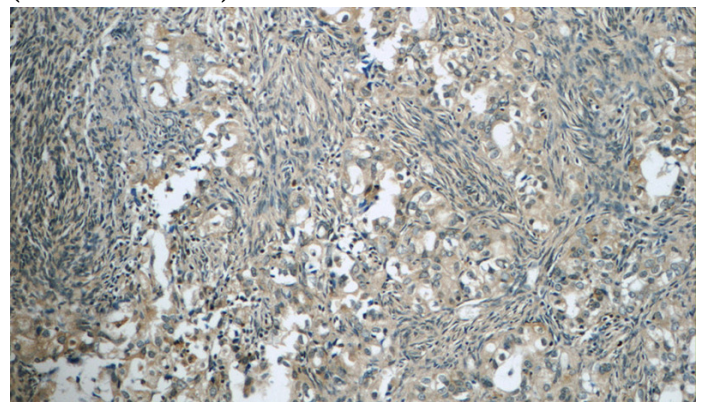
## Validations



Immunohistochemistry of paraffin-embedded human nephroblastoma tissue slide using Catalog No:116832(WIT1 Antibody) at dilution of 1:50 (under 10x lens)



Immunohistochemistry of paraffin-embedded human nephroblastoma tissue slide using Catalog No:116832(WIT1 Antibody) at dilution of 1:50 (under 40x lens)

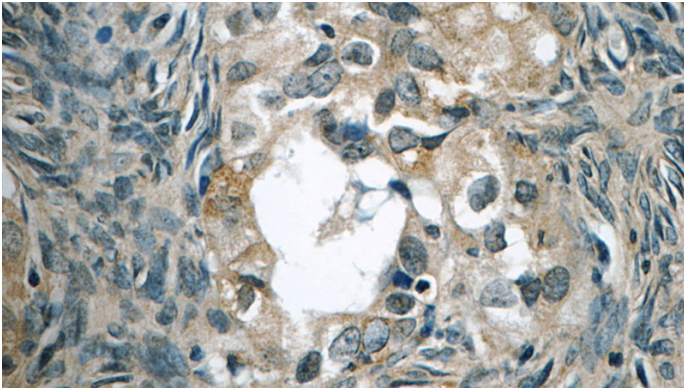


Immunohistochemistry of paraffin-embedded human ovary tumor tissue slide using Catalog No:116832(WIT1 Antibody) at dilution of 1:50 (under 10x lens)

# WIT1 antibody

Catalog Number: 116832

---



Immunohistochemistry of paraffin-embedded human ovary tumor tissue slide using Catalog No:116832(WIT1 Antibody) at dilution of 1:50 (under 40x lens)