

# WFDC12 antibody



Catalog Number: 116822

## Product name

WFDC12 antibody

## Specificity

Human; other species not tested.

## Antibody description

WFDC12 Rabbit Polyclonal antibody. Positive WB detected in Transfected HEK-293 cells.

## Preparation

This antibody was obtained by immunization of WFDC12 recombinant protein (Accession Number: NM\_080869). Purification method: Antigen affinity purified.

## Formulation

PBS with 0.1% sodium azide and 50% glycerol pH 7.3.

## Storage

Store at -20°C. DO NOT ALIQUOT

## Clonality

Polyclonal

## Ig Type

Rabbit IgG

## Applications

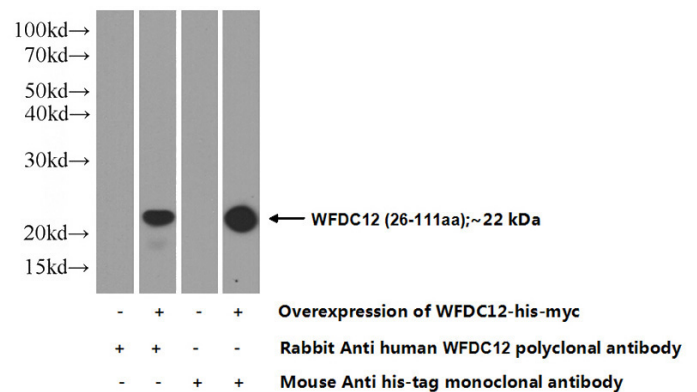
ELISA, WB

## Dilutions

Recommended Dilution:

WB: 1:1000-1:10000

## Validations



Transfected HEK-293 cells were subjected to SDS PAGE followed by western blot with Catalog No:116822(WFDC12 Antibody) at dilution of 1:500