

# WFDC1 antibody



Catalog Number: 116821

## Product name

WFDC1 antibody

Recommended Dilution:

WB: 1:200-1:2000

## Immunogen

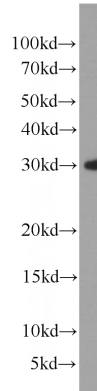
IHC: 1:20-1:200

[Human WFDC1 Recombinant protein \(GST tag\)](#)

## Validations

## Specificity

Human; other species not tested.



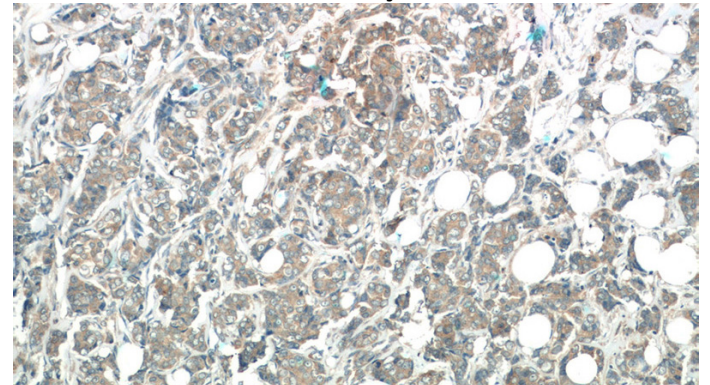
## Antibody description

WFDC1 Rabbit Polyclonal antibody. Positive WB detected in HEK-293 cells, PC-3 cells. Positive IHC detected in human breast cancer tissue, human small intestine tissue. Observed molecular weight by Western-blot: 29 kDa

HEK-293 cells were subjected to SDS PAGE followed by western blot with Catalog No:116821(WFDC1 antibody) at dilution of 1:1000

## Preparation

This antibody was obtained by immunization of WFDC1 recombinant protein (Accession Number: NM\_001282466). Purification method: Antigen affinity purified.



## Formulation

PBS with 0.02% sodium azide and 50% glycerol pH 7.3.

Immunohistochemistry of paraffin-embedded human breast cancer tissue slide using Catalog No:116821(WFDC1 Antibody) at dilution of 1:50 (under 10x lens)

## Storage

Store at -20°C. DO NOT ALIQUOT

## Clonality

Polyclonal

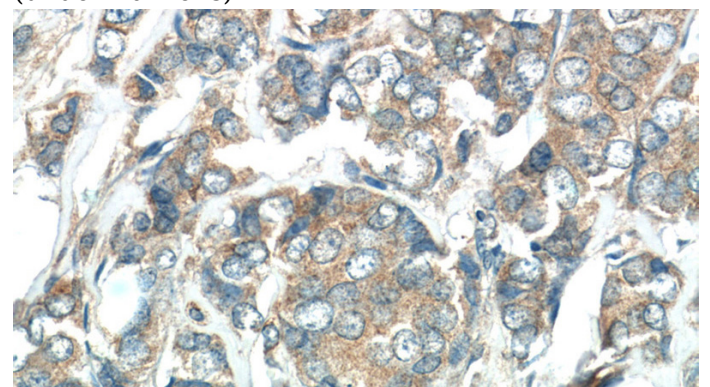
## Ig Type

Rabbit IgG

## Applications

ELISA, WB, IHC

## Dilutions



# WFDC1 antibody



Catalog Number: 116821

---

Immunohistochemistry of paraffin-embedded human breast cancer tissue slide using Catalog

No:116821(WFDC1 Antibody) at dilution of 1:50 (under 40x lens)