

# UFD1L antibody



Catalog Number: 116551

## Product name

UFD1L antibody

## Immunogen

[Human UFD1L Recombinant protein \(GST tag\)](#)

## Specificity

Human, Mouse, Rat; other species not tested.

## Antibody description

UFD1L Rabbit Polyclonal antibody. Positive IF detected in HeLa cells. Positive IHC detected in human skeletal muscle tissue, human pancreas cancer tissue. Positive WB detected in mouse thymus tissue, HepG2 cells, Raji cells. Positive IP detected in Raji cells. Observed molecular weight by Western-blot: 35 kDa

## Preparation

This antibody was obtained by immunization of UFD1L recombinant protein (Accession Number: NM\_005659). Purification method: Antigen affinity purified.

## Formulation

PBS with 0.1% sodium azide and 50% glycerol pH 7.3.

## Storage

Store at -20°C. DO NOT ALIQUOT

## Clonality

Polyclonal

## Ig Type

Rabbit IgG

## Applications

ELISA, WB, IHC, IF, IP

## Dilutions

Recommended Dilution:

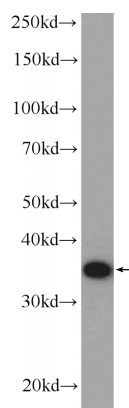
WB: 1:500-1:5000

IP: 1:500-1:5000

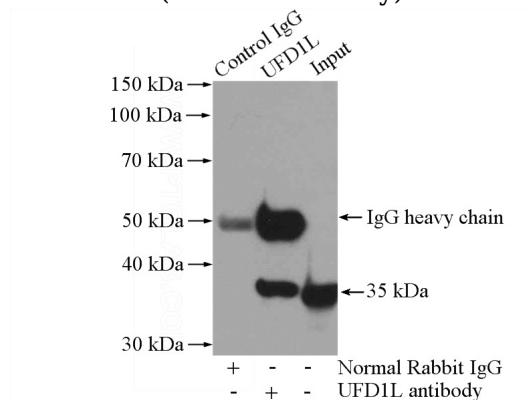
IHC: 1:20-1:200

IF: 1:10-1:100

## Validations



mouse thymus tissue were subjected to SDS PAGE followed by western blot with Catalog No:116551(UFD1L Antibody) at dilution of 1:1000



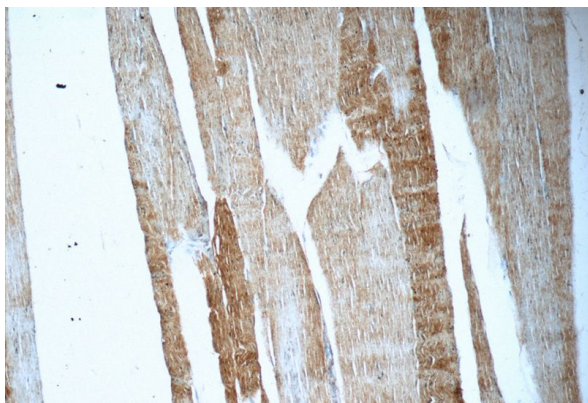
IP Result of anti-UFD1L (IP:Catalog No:116551, 4ug; Detection:Catalog No:116551 1:1000) with Raji cells lysate 2000ug.

# UFD1L antibody



Catalog Number: 116551

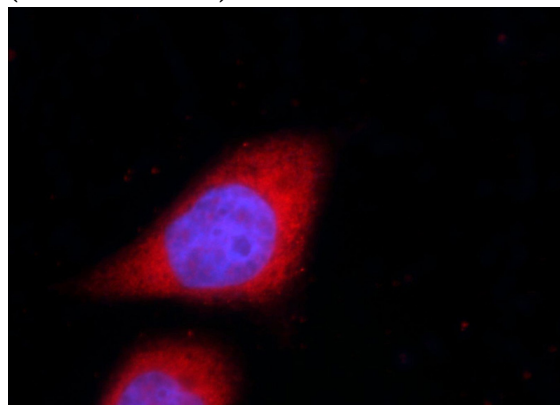
---



Immunohistochemistry of paraffin-embedded human skeletal muscle tissue slide using Catalog No:116551(UFD1L Antibody) at dilution of 1:50 (under 10x lens)



Immunohistochemistry of paraffin-embedded human skeletal muscle tissue slide using Catalog No:116551(UFD1L Antibody) at dilution of 1:50 (under 40x lens)



Immunofluorescent analysis of HeLa cells using Catalog No:116551(UFD1L Antibody) at dilution of 1:25 and Alexa Fluor 594-conjugated AffiniPure Goat Anti-Rabbit IgG(H+L)