

UBE2D3 antibody



Catalog Number: 116519

Product name

UBE2D3 antibody

Specificity

Human, Mouse, Rat; other species not tested.

Antibody description

UBE2D3 Rabbit Polyclonal antibody. Positive IHC detected in human prostate cancer tissue. Positive WB detected in human brain tissue, HEK-293 cells, HeLa cells, human heart tissue, Jurkat cells. Observed molecular weight by Western-blot: 17 kDa

Preparation

This antibody was obtained by immunization of UBE2D3 recombinant protein (Accession Number: NM_181889). Purification method: Antigen affinity purified.

Formulation

PBS with 0.1% sodium azide and 50% glycerol pH 7.3.

Storage

Store at -20°C. DO NOT ALIQUOT

Clonality

Polyclonal

Ig Type

Rabbit IgG

Applications

ELISA, WB, IHC

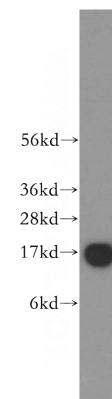
Dilutions

Recommended Dilution:

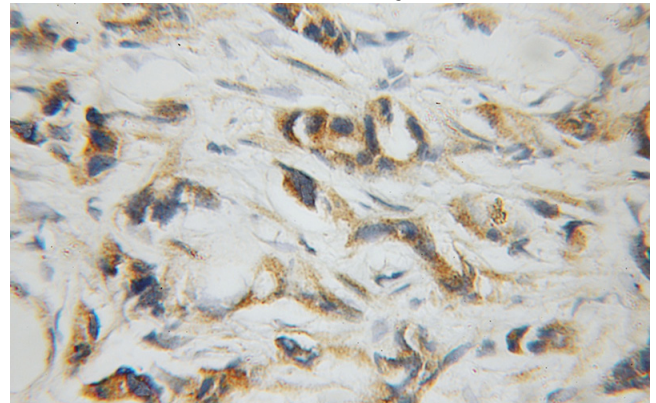
WB: 1:1000-1:10000

IHC: 1:20-1:200

Validations



human brain tissue were subjected to SDS PAGE followed by western blot with Catalog No:116519(UBE2D3 antibody) at dilution of 1:500



Immunohistochemical of paraffin-embedded human prostate cancer using Catalog No:116519(UBE2D3 antibody) at dilution of 1:100 (under 10x lens)