

# UBC9-Specific antibody

Catalog Number: 116511

## Product name

UBC9-Specific antibody

IHC: 1:20-1:200

IF: 1:10-1:100

## Specificity

Human, Mouse, Rat; other species not tested.

## Antibody description

UBC9-Specific Rabbit Polyclonal antibody. Positive IHC detected in human lung cancer tissue. Positive IF detected in HepG2 cells. Positive FC detected in HepG2 cells. Positive WB detected in HEK-293 cells, human testis tissue. Observed molecular weight by Western-blot: 18kd

## Preparation

This antibody was obtained by immunization of Peptide (Accession Number: NM\_003345). Purification method: Antigen affinity purified.

## Formulation

PBS with 0.02% sodium azide and 50% glycerol pH 7.3.

## Storage

Store at -20°C. DO NOT ALIQUOT

## Clonality

Polyclonal

## Ig Type

Rabbit IgG

## Applications

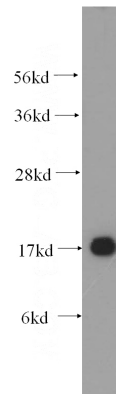
ELISA, WB, IHC, IF, FC

## Dilutions

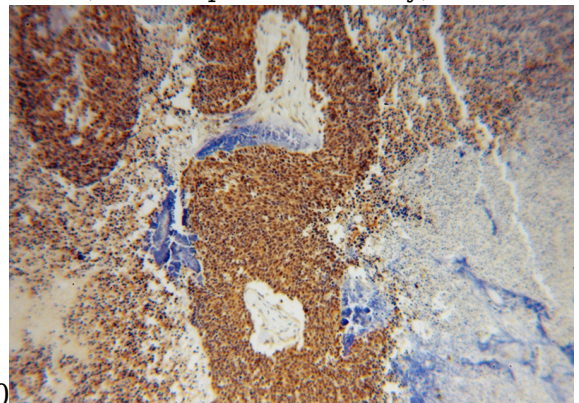
Recommended Dilution:

WB: 1:500-1:5000

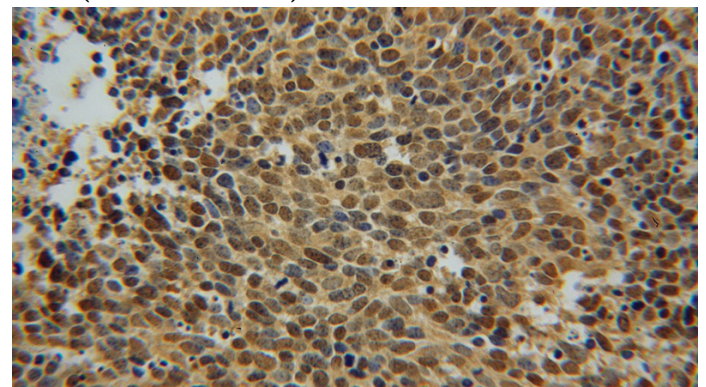
## Validations



HEK-293 cells were subjected to SDS PAGE followed by western blot with Catalog No:116511(UBE2I-Specific antibody) at dilution of



Immunohistochemical of paraffin-embedded human lung cancer using Catalog No:116511(UBE2I-Specific antibody) at dilution of 1:50 (under 10x lens)

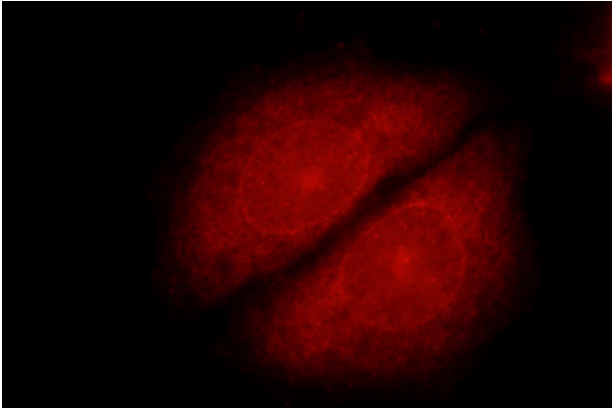


Immunohistochemical of paraffin-embedded

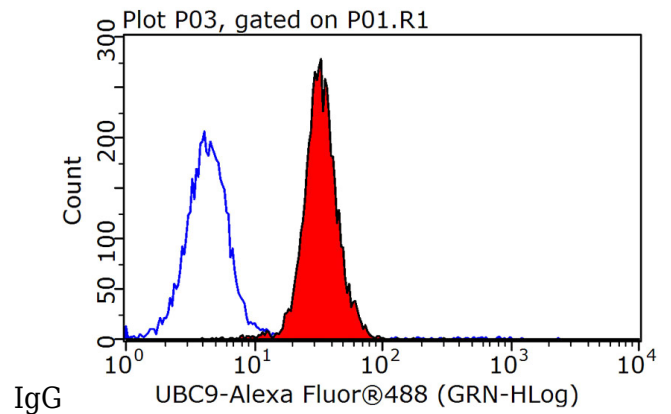
# UBC9-Specific antibody

Catalog Number: 116511

human lung cancer using Catalog  
No:116511(UBE2I-Specific antibody) at dilution of  
1:50 (under 40x lens)



Immunofluorescent analysis of HepG2 cells using  
Catalog No:116511(UBE2I-Specific Antibody) at  
dilution of 1:25 and Rhodamine-Goat anti-Rabbit



1X10<sup>6</sup> HepG2 cells were stained with 0.2ug  
UBE2I-Specific antibody (Catalog No:116511, red)  
and control antibody (blue). Fixed with 90%  
MeOH blocked with 3% BSA (30 min). Alexa Fluor  
488-conjugated AffiniPure Goat Anti-Rabbit  
IgG(H+L) with dilution 1:1500.