

# Twinkle antibody



Catalog Number: 116499

## Product name

Twinkle antibody

## Specificity

Human, Mouse, Rat; other species not tested.

## Antibody description

Twinkle Rabbit Polyclonal antibody. Positive WB detected in HeLa cells, Jurkat cells. Positive IHC detected in human skeletal muscle tissue. Observed molecular weight by Western-blot: 60kd

## Preparation

This antibody was obtained by immunization of Twinkle recombinant protein (Accession Number: BC033762). Purification method: Antigen affinity purified.

## Formulation

PBS with 0.02% sodium azide and 50% glycerol pH 7.3.

## Storage

Store at -20°C. DO NOT ALIQUOT

## Clonality

Polyclonal

## Ig Type

Rabbit IgG

## Applications

ELISA, WB, IHC

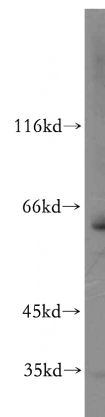
## Dilutions

Recommended Dilution:

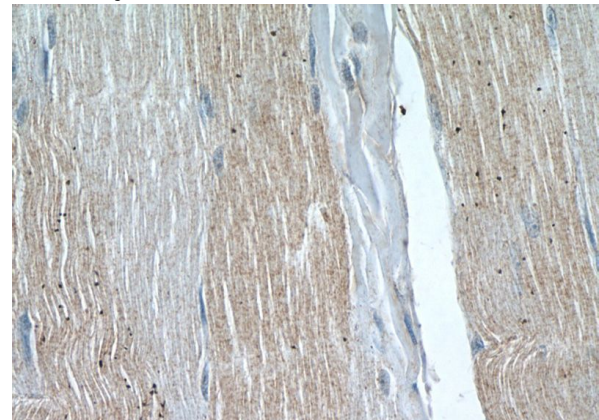
WB: 1:500-1:5000

IHC: 1:20-1:200

## Validations



HeLa cells were subjected to SDS PAGE followed by western blot with Catalog No:116499(PEO1 antibody) at dilution of 1:300



Immunohistochemistry of paraffin-embedded human skeletal muscle tissue slide using Catalog No:116499(PEO1 Antibody) at dilution of 1:50 (under 40x lens)