

TYW1B antibody



Catalog Number: 116461

Product name

TYW1B antibody

WB: 1:200-1:2000

IHC: 1:20-1:200

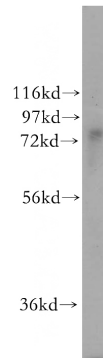
Immunogen

[Human TYW1B Recombinant protein \(GST tag\)](#)

Validations

Specificity

human, mouse, rat; other species not tested.



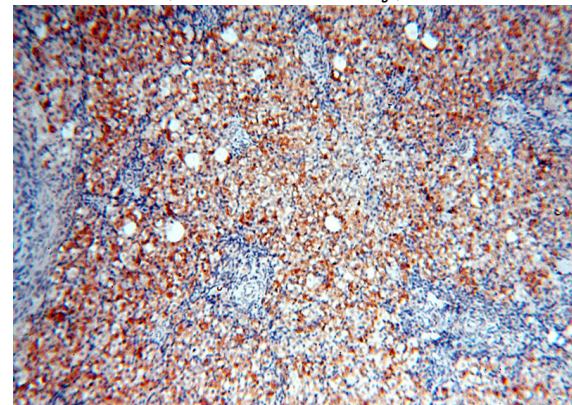
Antibody description

TYW1B Rabbit Polyclonal antibody. Positive WB detected in mouse liver tissue, MCF7 cells. Positive IHC detected in human ovary. Observed molecular weight by Western-blot: 77kd

mouse liver tissue were subjected to SDS PAGE followed by western blot with Catalog No:116461(TYW1B antibody) at dilution of 1:500

Preparation

This antibody was obtained by immunization of TYW1B recombinant protein (Accession Number: NM_001145440). Purification method: Antigen affinity purified.



Formulation

PBS with 0.02% sodium azide and 50% glycerol pH 7.3.

Storage

Store at -20°C. DO NOT ALIQUOT

Clonality

Polyclonal

Ig Type

Rabbit IgG

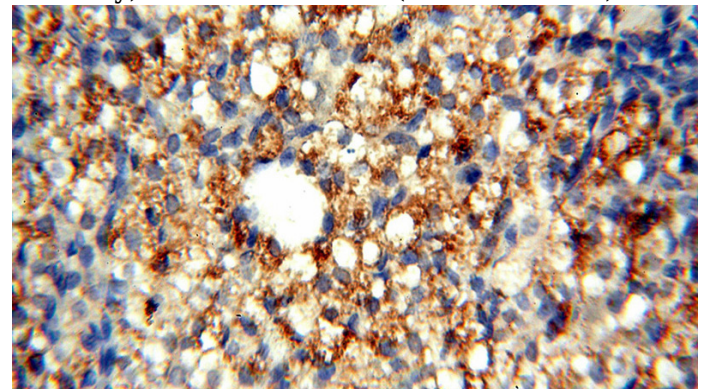
Applications

ELISA, WB, IHC

Dilutions

Recommended Dilution:

Immunohistochemical of paraffin-embedded human ovary using Catalog No:116461(TYW1B antibody) at dilution of 1:50 (under 10x lens)



Immunohistochemical of paraffin-embedded human ovary using Catalog No:116461(TYW1B

TYW1B antibody



Catalog Number: 116461

antibody) at dilution of 1:50 (under 40x lens)