

TREM1 antibody



Catalog Number: 116356

General Information

Product name:

TREM1 antibody

Immunogen:

Applications:

ELISA, WB, IF, FC

Specificity:

Human, Mouse; other species not tested.

Antibody description:

TREM1 Rabbit Polyclonal antibody. Positive WB detected in PC-3 cells, A549 cells, HepG2 cells, human liver tissue, human spleen tissue, mouse lung tissue. Positive IF detected in HepG2 cells. Positive FC detected in HeLa cells. Observed molecular weight by Western-blot: 30 kDa

Properties

Preparation:

This antibody was obtained by immunization of TREM1 recombinant protein (Accession Number: NM_018643). Purification method: Antigen affinity purified.

Formulation:

PBS with 0.1% sodium azide and 50% glycerol pH 7.3.

Storage:

Store at -20°C. DO NOT ALIQUOT

Clonality:

Polyclonal

Ig Type:Rabbit IgG

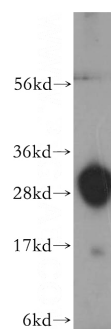
Applications

Recommended Dilution:

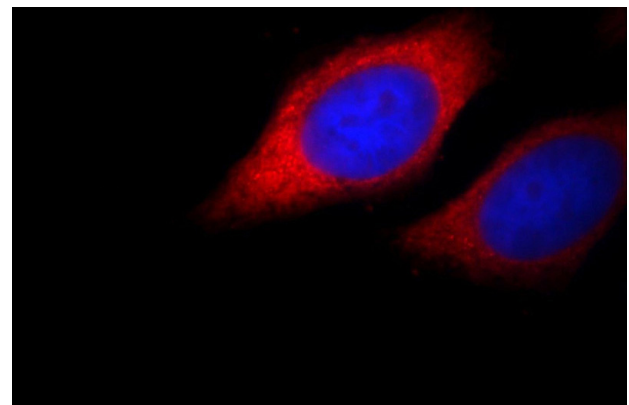
WB: 1:500-1:5000

IF: 1:10-1:100

Validations



PC-3 cells were subjected to SDS PAGE followed by western blot with Catalog No:116356(TREM1 antibody) at dilution of 1:400

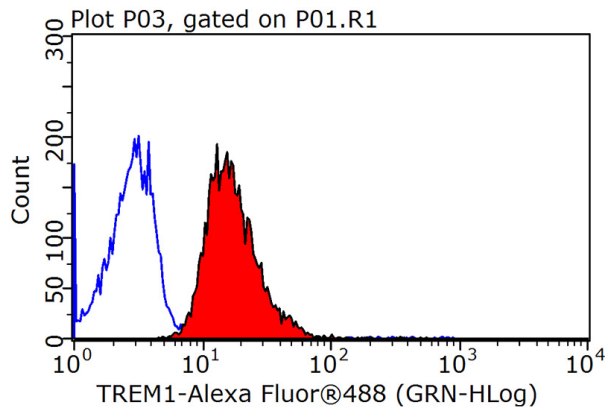


Immunofluorescent analysis of HepG2 cells, using TREM1 antibody Catalog No:116356 at 1:25 dilution and Rhodamine-labeled goat anti-rabbit IgG (red).Blue pseudocolor = DAPI (fluorescent DNA dye).

TREM1 antibody



Catalog Number: 116356



1X10⁶ HeLa cells were stained with 0.2ug TREM1 antibody (Catalog No:116356, red) and control antibody (blue). Fixed with 90% MeOH blocked with 3% BSA (30 min). Alexa Fluor 488-conjugated AffiniPure Goat Anti-Rabbit IgG(H+L) with dilution 1:1500.