

TRAP1 antibody

Catalog Number: 116338

Product name

TRAP1 antibody

Specificity

Human, Mouse, Rat; other species not tested.

Antibody description

TRAP1 Rabbit Polyclonal antibody. Positive WB detected in Raji cells, HeLa cells, HepG2 cells, HL-60 cells, K-562 cells, mouse heart tissue, NIH/3T3 cells. Positive IF detected in HeLa cells. Positive IHC detected in human heart tissue. Positive FC detected in HeLa cells. Observed molecular weight by Western-blot: 66-70 kDa, 60 kDa

Preparation

This antibody was obtained by immunization of TRAP1 recombinant protein (Accession Number: BC000406). Purification method: Antigen affinity purified.

Formulation

PBS with 0.1% sodium azide and 50% glycerol pH 7.3.

Storage

Store at -20°C. DO NOT ALIQUOT

Clonality

Polyclonal

Ig Type

Rabbit IgG

Applications

ELISA, WB, IHC, IF, FC

Dilutions

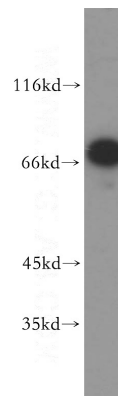
Recommended Dilution:

WB: 1:500-1:5000

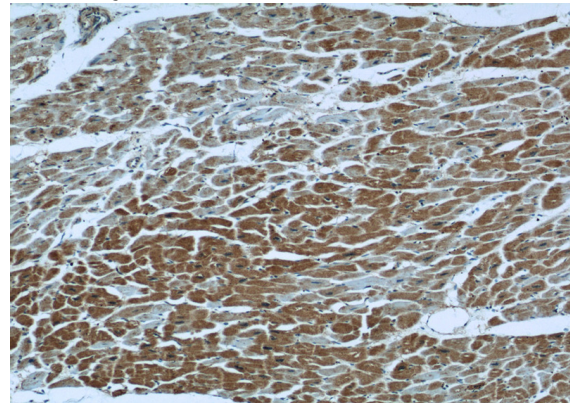
IHC: 1:20-1:200

IF: 1:10-1:100

Validations



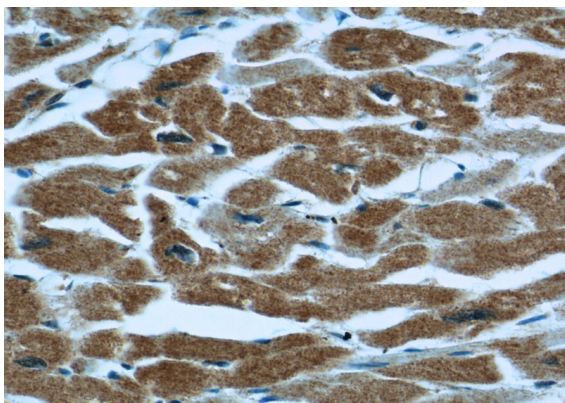
Raji cells were subjected to SDS PAGE followed by western blot with Catalog No:116338(TRAP1 antibody) at dilution of 1:500



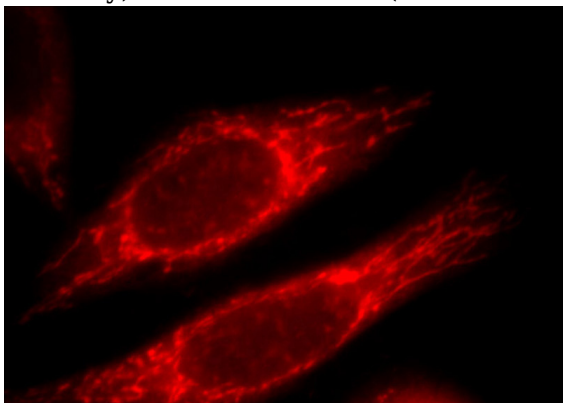
Immunohistochemical of paraffin-embedded human heart using Catalog No:116338(TRAP1 antibody) at dilution of 1:50 (under 10x lens)

TRAP1 antibody

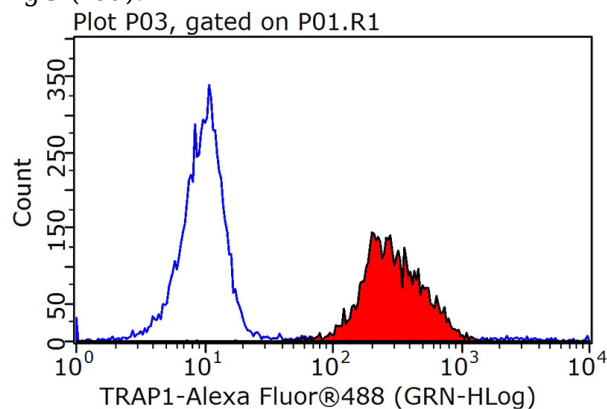
Catalog Number: 116338



Immunohistochemical of paraffin-embedded human heart using Catalog No:116338(TRAP1 antibody) at dilution of 1:50 (under 40x lens)



Immunofluorescent analysis of HeLa cells, using TRAP1 antibody Catalog No:116338 at 1:25 dilution and Rhodamine-labeled goat anti-rabbit IgG (red).



1X10⁶ HeLa cells were stained with 0.2ug TRAP1 antibody (Catalog No:116338, red) and control antibody (blue). Fixed with 90% MeOH blocked with 3% BSA (30 min). Alexa Fluor 488-conjugated AffiniPure Goat Anti-Rabbit IgG(H+L) with dilution 1:1000.