

# TMP21 antibody

Catalog Number: 116273

## Product name

TMP21 antibody

IHC: 1:20-1:200

IF: 1:10-1:100

## Specificity

Human, Mouse, Rat; other species not tested.

## Antibody description

TMP21 Rabbit Polyclonal antibody. Positive IHC detected in human pancreas tissue, human colon cancer tissue. Positive IF detected in Hela cells. Positive WB detected in mouse pancreas tissue, BxPC-3 cells, PC-3 cells. Observed molecular weight by Western-blot: 21kd

## Preparation

This antibody was obtained by immunization of TMP21 recombinant protein (Accession Number: NM\_006827). Purification method: Antigen affinity purified.

## Formulation

PBS with 0.02% sodium azide and 50% glycerol pH 7.3.

## Storage

Store at -20°C. DO NOT ALIQUOT

## Clonality

Polyclonal

## Ig Type

Rabbit IgG

## Applications

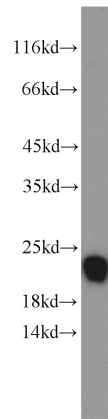
ELISA, WB, IHC, IF

## Dilutions

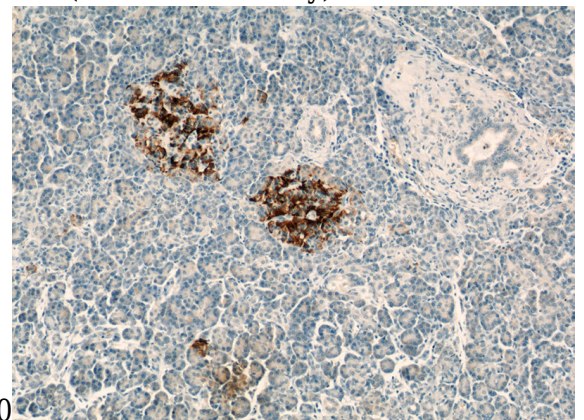
Recommended Dilution:

WB: 1:500-1:5000

## Validations

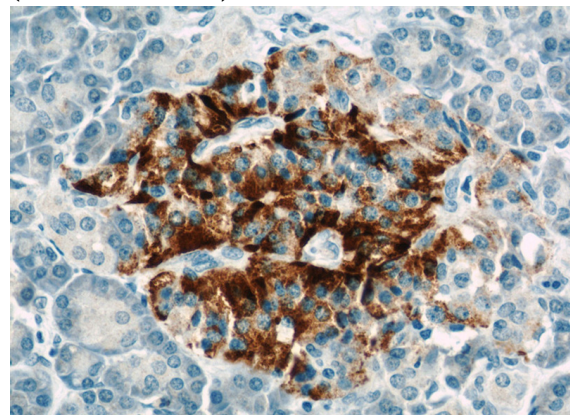


mouse pancreas tissue were subjected to SDS PAGE followed by western blot with Catalog No:116273(TMED10 antibody) at dilution of



1:1000

Immunohistochemical of paraffin-embedded human pancreas using Catalog No:116273(TMED10 antibody) at dilution of 1:50 (under 10x lens)

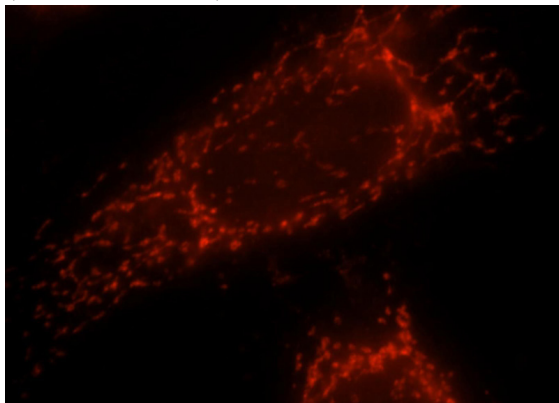


# TMP21 antibody

Catalog Number: 116273

---

Immunohistochemical of paraffin-embedded human pancreas using Catalog No:116273(TMED10 antibody) at dilution of 1:50 (under 40x lens)



Immunofluorescent analysis of Hela cells, using TMED10 antibody Catalog No:116273 at 1:25 dilution and Rhodamine-labeled goat anti-rabbit IgG (red).