

# TOMM34 antibody



Catalog Number: 116240

## Product name

TOMM34 antibody

WB: 1:1000-1:10000

IP: 1:200-1:1000

## Specificity

Human, Mouse, Rat; other species not tested.

IHC: 1:20-1:200

IF: 1:10-1:100

## Antibody description

TOMM34 Rabbit Polyclonal antibody. Positive IF detected in MCF-7 cells. Positive IHC detected in human colon cancer tissue. Positive WB detected in PC-3 cells, A375 cells, HeLa cells, human brain tissue, human kidney tissue, mouse testis tissue. Positive IP detected in HeLa cells. Observed molecular weight by Western-blot: 35 kDa

## Validations

### Preparation

This antibody was obtained by immunization of TOMM34 recombinant protein (Accession Number: NM\_006809). Purification method: Antigen affinity purified.

### Formulation

PBS with 0.1% sodium azide and 50% glycerol pH 7.3.

### Storage

Store at -20°C. DO NOT ALIQUOT

### Clonality

Polyclonal

### Ig Type

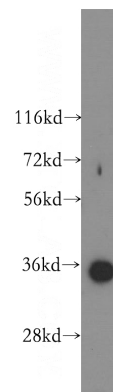
Rabbit IgG

### Applications

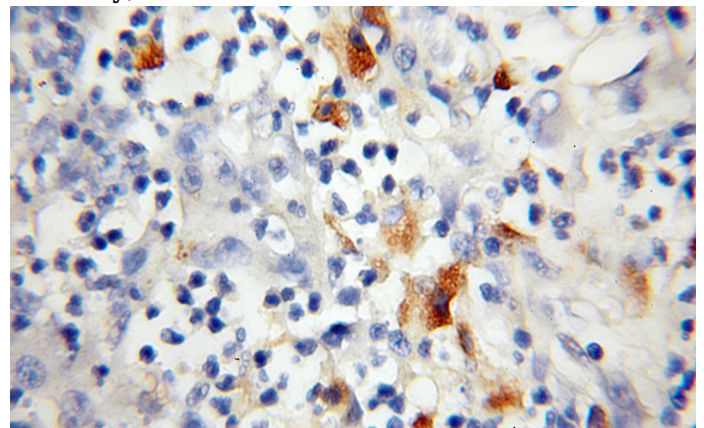
ELISA, WB, IHC, IF, IP


### Dilutions

Recommended Dilution:



PC-3 cells were subjected to SDS PAGE followed by western blot with Catalog No:116240(TOMM34 antibody) at dilution of 1:400



Immunohistochemical of paraffin-embedded human colon cancer using Catalog No:116240(TOMM34 antibody) at dilution of 1:100 (under 10x lens) 

Immunofluorescent analysis of MCF-7 cells, using TOMM34 antibody Catalog No:116240 at 1:25 dilution and Rhodamine-labeled goat anti-rabbit

# TOMM34 antibody

Catalog Number: 116240

---

IP Result of anti-TOMM34 (IP:Catalog No:116240, 4ug; Detection:Catalog No:116240 1:300) with HeLa cells lysate 4000ug.

