

TPX2 antibody

Catalog Number: 116223

Product name

TPX2 antibody

IP: 1:200-1:2000

IHC: 1:20-1:200

Specificity

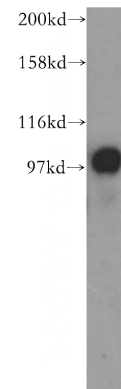
Human, Mouse, Rat; other species not tested.

IF: 1:10-1:100

Antibody description

TPX2 Rabbit Polyclonal antibody. Positive WB detected in HeLa cells, K-562 cells. Positive IP detected in HeLa cells. Positive IHC detected in human prostate cancer tissue. Positive IF detected in HepG2 cells. Observed molecular weight by Western-blot: 100 kDa

Validations



Preparation

This antibody was obtained by immunization of TPX2 recombinant protein (Accession Number: NM_012112). Purification method: Antigen affinity purified.

HeLa cells were subjected to SDS PAGE followed by western blot with Catalog No:116223(TPX2 antibody) at dilution of 1:500

Formulation

PBS with 0.1% sodium azide and 50% glycerol pH 7.3.

Storage

Store at -20°C. DO NOT ALIQUOT

Clonality

Polyclonal

Ig Type

Rabbit IgG

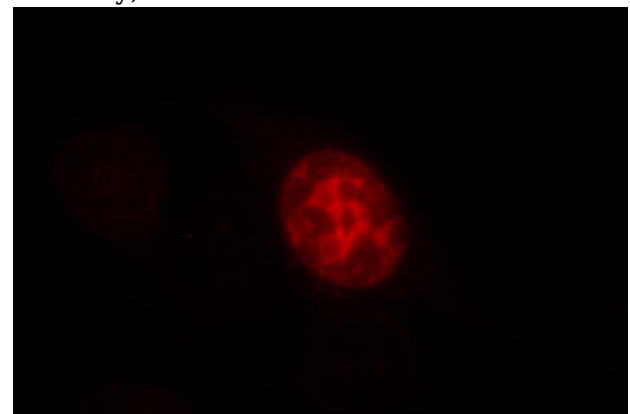
Applications

ELISA, WB, IF, IP, IHC

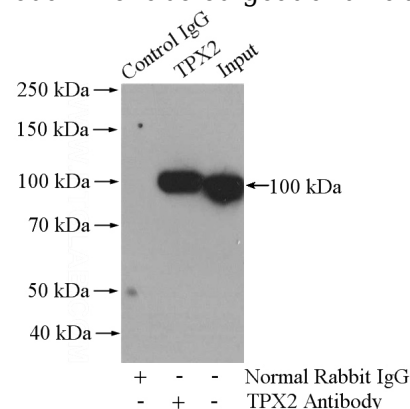
Dilutions

Recommended Dilution:

WB: 1:1000-1:10000



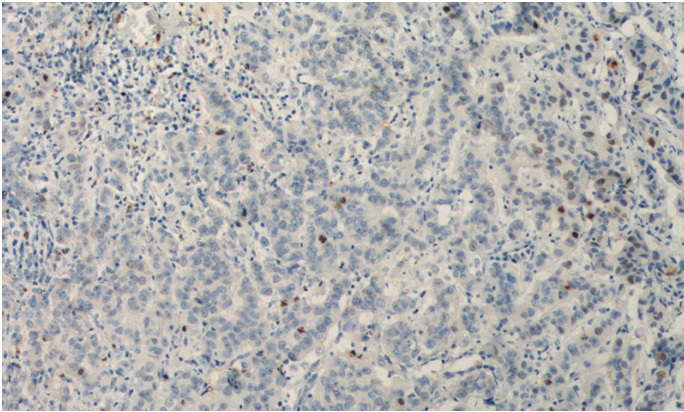
Immunofluorescent analysis of HepG2 cells, using TPX2 antibody Catalog No:116223 at 1:25 dilution and Rhodamine-labeled goat anti-rabbit IgG (red).



TPX2 antibody

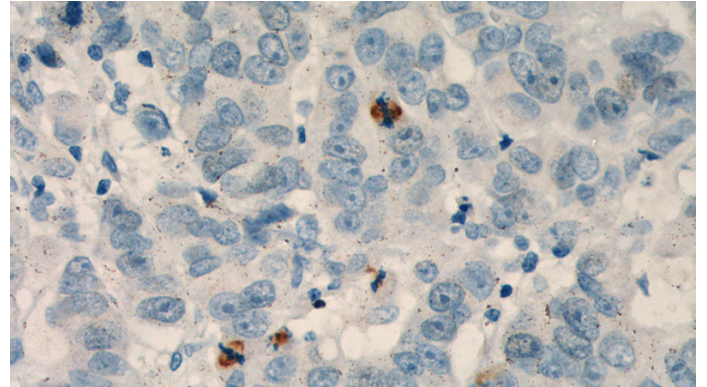
Catalog Number: 116223

IP Result of anti-TPX2 (IP:Catalog No:116223, 4ug; Detection:Catalog No:116223 1:800) with HeLa cells lysate 880ug.



Immunohistochemistry of paraffin-embedded human prostate cancer tissue slide using Catalog No:116223(TPX2 Antibody) at dilution of 1:200

(under 10x lens). heat mediated antigen retrieved with Tris-EDTA buffer(pH9).



Immunohistochemistry of paraffin-embedded human prostate cancer tissue slide using Catalog No:116223(TPX2 Antibody) at dilution of 1:200 (under 40x lens). heat mediated antigen retrieved with Tris-EDTA buffer(pH9).