

TPPII antibody



Catalog Number: 116210

Product name

TPPII antibody

Immunogen

[Human TPP2 Recombinant protein \(His tag\)](#)

Specificity

Human, Mouse; other species not tested.

Antibody description

TPPII Rabbit Polyclonal antibody. Positive IF detected in HepG2 cells. Positive IHC detected in human gliomas tissue. Positive FC detected in HepG2 cells. Positive IP detected in Jurkat cells. Positive WB detected in Jurkat cells, K-562 cells. Observed molecular weight by Western-blot: 135-140 kDa

Preparation

This antibody was obtained by immunization of TPPII recombinant protein (Accession Number: NM_003291). Purification method: Antigen affinity purified.

Formulation

PBS with 0.02% sodium azide and 50% glycerol pH 7.3.

Storage

Store at -20°C. DO NOT ALIQUOT

Clonality

Polyclonal

Ig Type

Rabbit IgG

Applications

ELISA, WB, IHC, IF, FC, IP

Dilutions

Recommended Dilution:

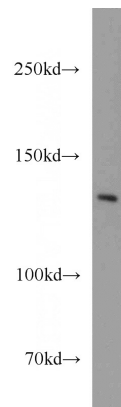
WB: 1:500-1:5000

IP: 1:200-1:2000

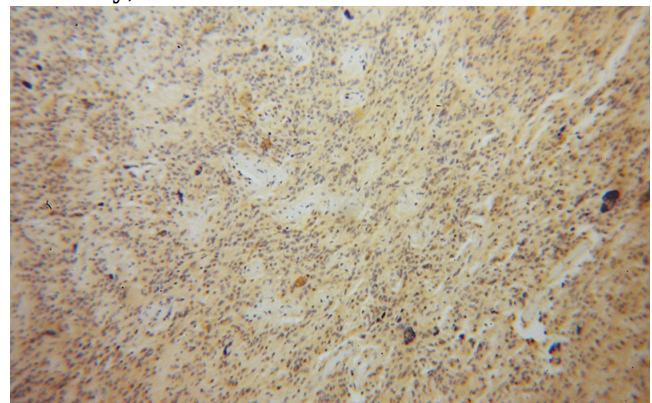
IHC: 1:20-1:200

IF: 1:20-1:200

Validations



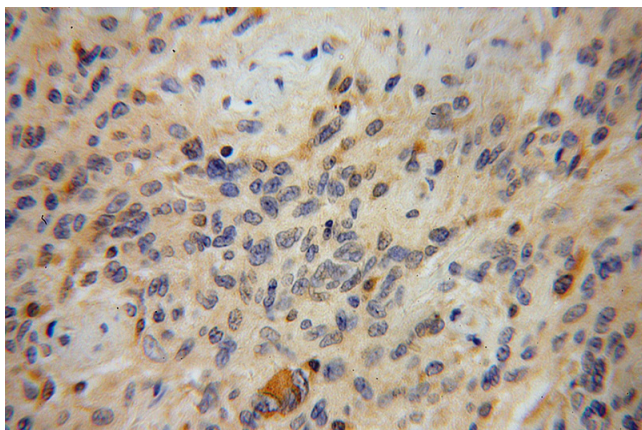
Jurkat cells were subjected to SDS PAGE followed by western blot with Catalog No:116210(TPP2 antibody) at dilution of 1:1000



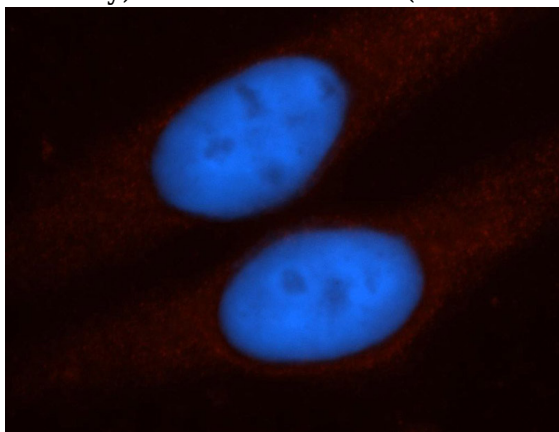
Immunohistochemical of paraffin-embedded human gliomas using Catalog No:116210(TPP2 antibody) at dilution of 1:100 (under 10x lens)

TPPII antibody

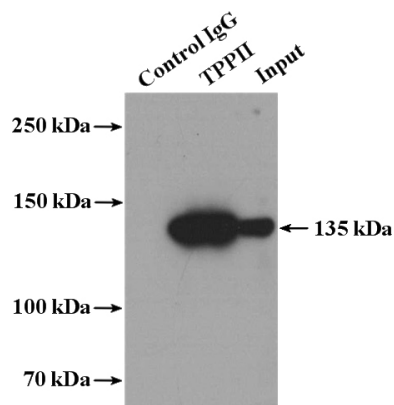
Catalog Number: 116210



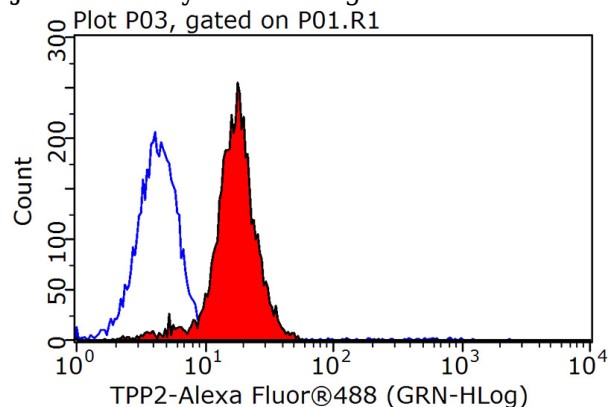
Immunohistochemical of paraffin-embedded human gliomas using Catalog No:116210(TPP2 antibody) at dilution of 1:100 (under 40x lens)



Immunofluorescent analysis of HepG2 cells, using TPP2 antibody Catalog No:116210 at 1:50 dilution and Rhodamine-labeled goat anti-rabbit IgG (red). Blue pseudocolor = DAPI (fluorescent DNA dye).



IP Result of anti-TPP2 (IP:Catalog No:116210, 4ug; Detection:Catalog No:107634, 1:500) with Jurkat cells lysate 2400ug.



1×10^6 HepG2 cells were stained with 0.2ug TPP2 antibody (Catalog No:116210, red) and control antibody (blue). Fixed with 90% MeOH blocked with 3% BSA (30 min). Alexa Fluor 488-conjugated AffiniPure Goat Anti-Rabbit IgG(H+L) with dilution 1:1500.