

Tom22 antibody



Catalog Number: 116172

Product name

Tom22 antibody

Immunogen

[Human TOMM22 Recombinant protein \(GST tag\)](#)

Specificity

Human; other species not tested.

Antibody description

Tom22 Rabbit Polyclonal antibody. Positive IHC detected in human colon cancer tissue. Positive WB detected in human liver tissue, HeLa cells, human lung tissue, K-562 cells. Observed molecular weight by Western-blot: 15 kDa

Preparation

This antibody was obtained by immunization of Tom22 recombinant protein (Accession Number: NM_020243). Purification method: Antigen affinity purified.

Formulation

PBS with 0.1% sodium azide and 50% glycerol pH 7.3.

Storage

Store at -20°C. DO NOT ALIQUOT

Clonality

Polyclonal

Ig Type

Rabbit IgG

Applications

ELISA, WB, IHC

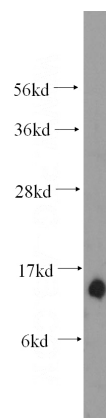
Dilutions

Recommended Dilution:

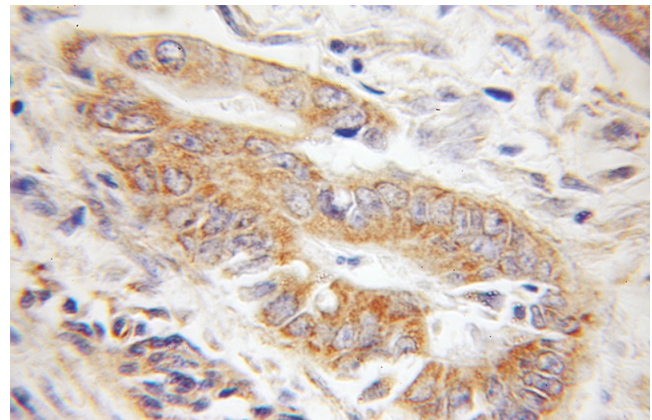
WB: 1:200-1:2000

IHC: 1:20-1:200

Validations



human liver tissue were subjected to SDS PAGE followed by western blot with Catalog No:116172(TOMM22 antibody) at dilution of 1:500



Immunohistochemical of paraffin-embedded human colon cancer using Catalog No:116172(TOMM22 antibody) at dilution of 1:100 (under 10x lens)