

# TOB2 antibody

Catalog Number: 116164

## Product name

TOB2 antibody

IHC: 1:20-1:200

IF: 1:10-1:100

## Specificity

Human, Mouse, Rat; other species not tested.

## Antibody description

TOB2 Rabbit Polyclonal antibody. Positive IF detected in HepG2 cells. Positive IHC detected in human skeletal muscle tissue, human kidney tissue. Positive WB detected in rat skeletal muscle tissue, mouse skeletal muscle tissue. Observed molecular weight by Western-blot: 43 kDa

## Preparation

This antibody was obtained by immunization of TOB2 recombinant protein (Accession Number: XM\_005261315). Purification method: Antigen affinity purified.

## Formulation

PBS with 0.1% sodium azide and 50% glycerol pH 7.3.

## Storage

Store at -20°C. DO NOT ALIQUOT

## Clonality

Polyclonal

## Ig Type

Rabbit IgG

## Applications

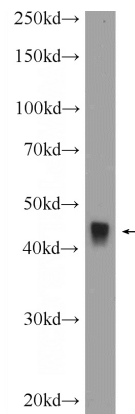
ELISA, WB, IHC, IF

## Dilutions

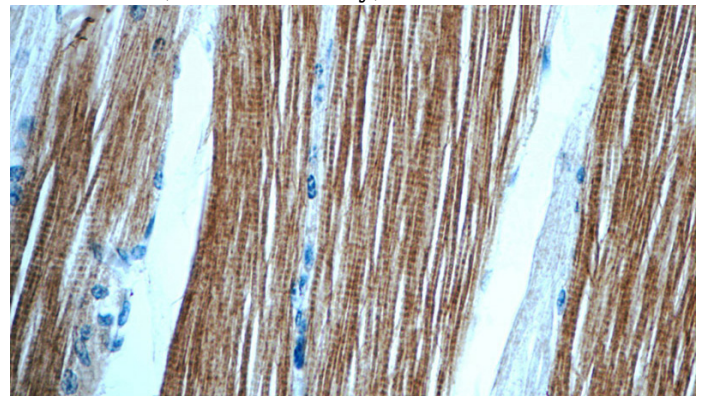
Recommended Dilution:

WB: 1:200-1:1000

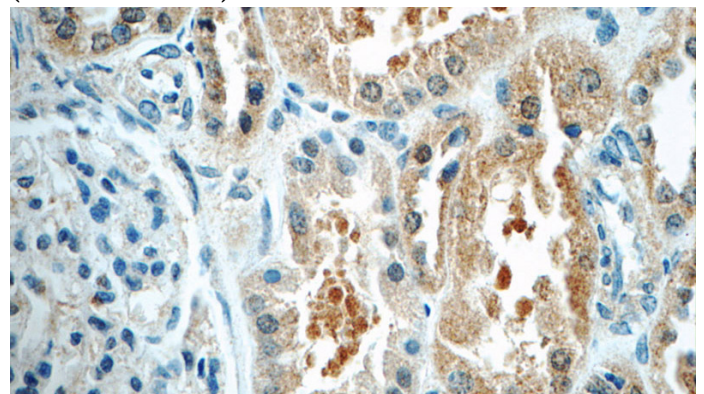
## Validations



rat skeletal muscle tissue were subjected to SDS PAGE followed by western blot with Catalog No:116164(TOB2 Antibody) at dilution of 1:300



Immunohistochemistry of paraffin-embedded human skeletal muscle tissue slide using Catalog No:116164(TOB2 Antibody) at dilution of 1:50 (under 40x lens)



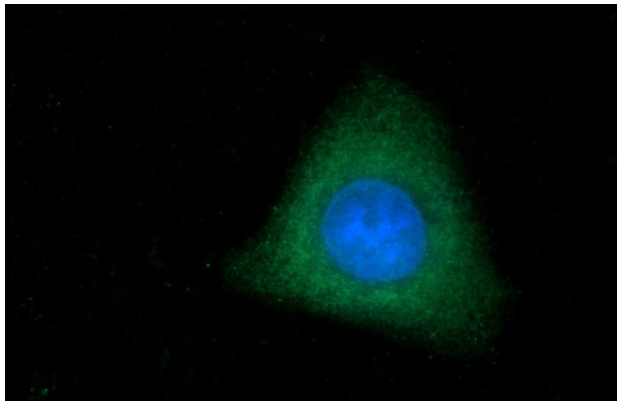
Immunohistochemistry of paraffin-embedded

# TOB2 antibody

Catalog Number: 116164

---

human kidney tissue slide using Catalog No:116164(TOB2 Antibody) at dilution of 1:100 (under 40x lens)



Immunofluorescent analysis of HepG2 cells using Catalog No:116164(TOB2 Antibody) at dilution of 1:25 and Alexa Fluor 488-conjugated AffiniPure Goat Anti-Rabbit IgG(H+L)