

# TMED2 antibody

Catalog Number: 116085

## Product name

TMED2 antibody

IHC: 1:20-1:200

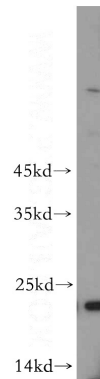
## Specificity

Human, Mouse; other species not tested.

## Antibody description

TMED2 Rabbit Polyclonal antibody. Positive IHC detected in human pancreas cancer tissue. Positive WB detected in mouse pancreas tissue, mouse liver tissue, mouse skin tissue. Observed molecular weight by Western-blot: 23 kDa

## Validations



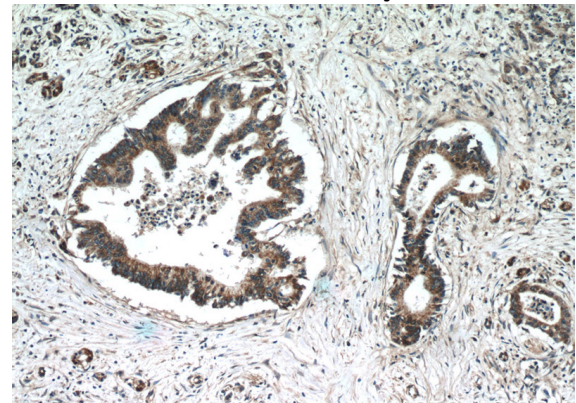
## Preparation

This antibody was obtained by immunization of TMED2 recombinant protein (Accession Number: NM\_006815). Purification method: Antigen affinity purified.

mouse pancreas tissue were subjected to SDS PAGE followed by western blot with Catalog No:116085(TMED2 antibody) at dilution of 1:500

## Formulation

PBS with 0.1% sodium azide and 50% glycerol pH 7.3.



## Storage

Store at -20°C. DO NOT ALIQUOT

## Clonality

Polyclonal

## Ig Type

Rabbit IgG

## Applications

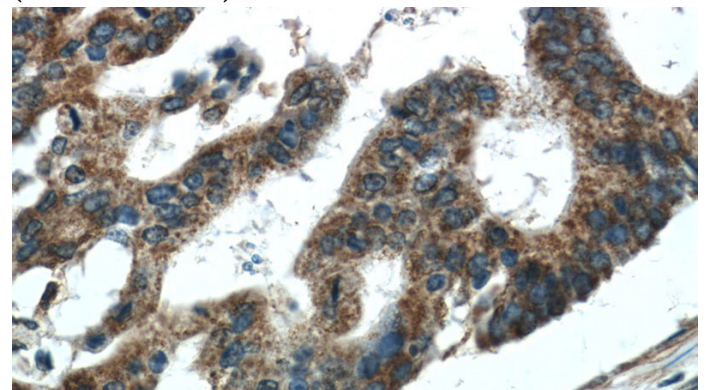
ELISA, WB, IHC

## Dilutions

Recommended Dilution:

WB: 1:200-1:2000

Immunohistochemistry of paraffin-embedded human pancreas cancer tissue slide using Catalog No:116085(TMED2 Antibody) at dilution of 1:50 (under 10x lens)



Immunohistochemistry of paraffin-embedded human pancreas cancer tissue slide using Catalog No:116085(TMED2 Antibody) at dilution of 1:50

# TMED2 antibody



Catalog Number: 116085

---

(under 40x lens)