

TM7SF2 antibody



Catalog Number: 116078

Product name

TM7SF2 antibody

WB: 1:500-1:5000

IHC: 1:20-1:200

Specificity

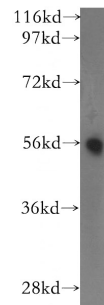
Human, Mouse, Rat; other species not tested.

IF: 1:10-1:100

Validations

Antibody description

TM7SF2 Rabbit Polyclonal antibody. Positive IF detected in PC-3 cells. Positive IHC detected in human prostate cancer tissue. Positive WB detected in human lung tissue, BxPC-3 cells, human heart tissue, human kidney tissue, PC-3 cells. Observed molecular weight by Western-blot: 55-60kd



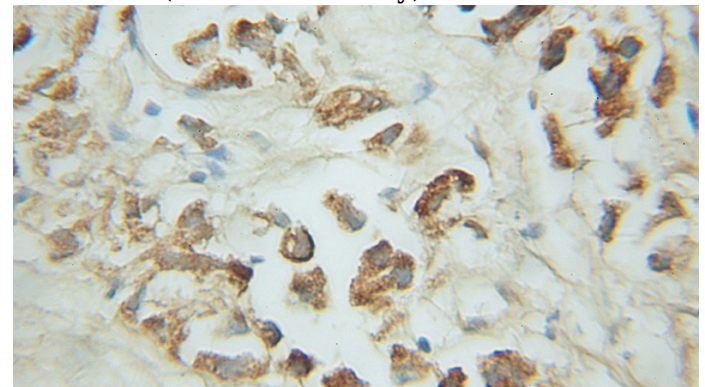
Preparation

This antibody was obtained by immunization of TM7SF2 recombinant protein (Accession Number: NM_003273). Purification method: Antigen affinity purified.

human lung tissue were subjected to SDS PAGE followed by western blot with Catalog No:116078(TM7SF2 antibody) at dilution of 1:400

Formulation

PBS with 0.02% sodium azide and 50% glycerol pH 7.3.



Storage

Store at -20°C. DO NOT ALIQUOT

Clonality

Polyclonal

Immunohistochemical of paraffin-embedded human prostate cancer using Catalog No:116078(TM7SF2 antibody) at dilution of 1:50 (under 10x lens)

Ig Type

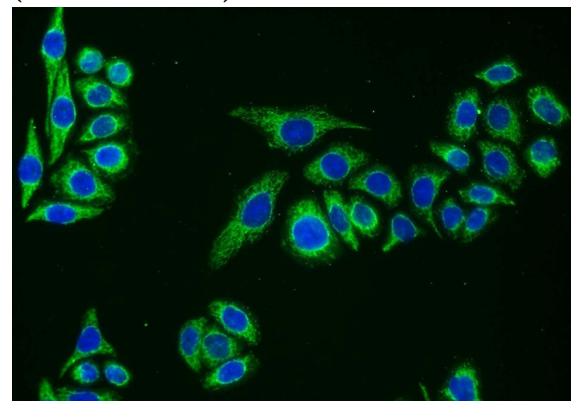
Rabbit IgG

Applications

ELISA, WB, IHC, IF

Dilutions

Recommended Dilution:



TM7SF2 antibody



Catalog Number: 116078

Immunofluorescent analysis of PC-3 cells using Catalog No:116078(TM7SF2 Antibody) at dilution of 1:25 and Alexa Fluor 488-conjugated AffiniPure Goat Anti-Rabbit IgG(H+L)