

TLE3 antibody

Catalog Number: 116070

Product name

TLE3 antibody

IP: 1:500-1:5000

IHC: 1:20-1:200

Specificity

Human, Mouse, Rat; other species not tested.

Antibody description

TLE3 Rabbit Polyclonal antibody. Positive IHC detected in human lung cancer tissue, human breast cancer tissue. Positive IP detected in HepG2 cells. Positive WB detected in HEK-293 cells, A431 cells, HepG2 cells. Observed molecular weight by Western-blot: 90 kDa

Preparation

This antibody was obtained by immunization of TLE3 recombinant protein (Accession Number: BC015729). Purification method: Antigen affinity purified.

Formulation

PBS with 0.02% sodium azide and 50% glycerol pH 7.3.

Storage

Store at -20°C. DO NOT ALIQUOT

Clonality

Polyclonal

Ig Type

Rabbit IgG

Applications

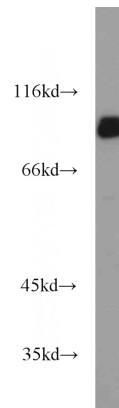
ELISA, WB, IHC, IP

Dilutions

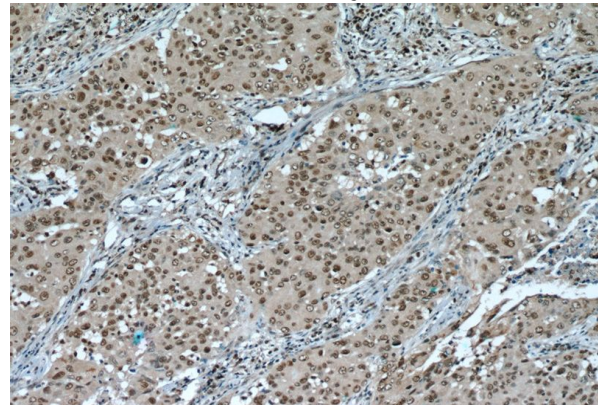
Recommended Dilution:

WB: 1:500-1:5000

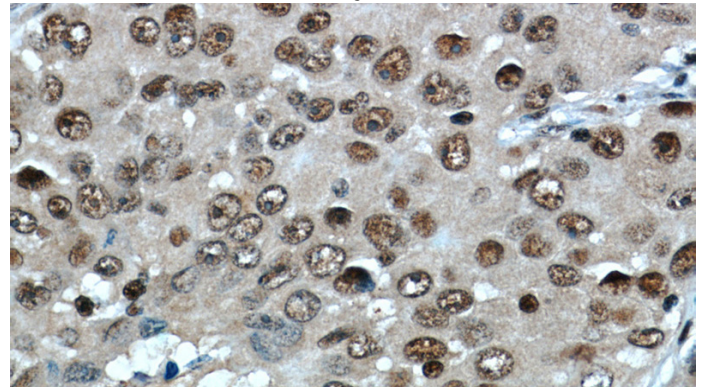
Validations



HEK-293 cells were subjected to SDS PAGE followed by western blot with Catalog No:116070(TLE3 antibody) at dilution of 1:1000



Immunohistochemistry of paraffin-embedded human lung cancer slide using Catalog No:116070(TLE3 Antibody) at dilution of 1:50



Immunohistochemistry of paraffin-embedded human lung cancer slide using Catalog

TLE3 antibody

Catalog Number: 116070

No:116070(TLE3 Antibody) at dilution of 1:50

IP Result of anti-TLE3 (IP:Catalog No:116070, 4ug; Detection:Catalog No:116070 1:1000) with HepG2 cells lysate 2400ug.

