

# TIP30 antibody



Catalog Number: 116062

## Product name

TIP30 antibody

## Specificity

Human, Mouse, Rat; other species not tested.

## Antibody description

TIP30 Rabbit Polyclonal antibody. Positive WB detected in HeLa cells, SW 1990 cells. Observed molecular weight by Western-blot: 30 kDa

## Preparation

This antibody was obtained by immunization of TIP30 recombinant protein (Accession Number: NM\_001098520). Purification method: Antigen affinity purified.

## Formulation

PBS with 0.1% sodium azide and 50% glycerol pH 7.3.

## Storage

Store at -20°C. DO NOT ALIQUOT

## Clonality

Polyclonal

## Ig Type

Rabbit IgG

## Applications

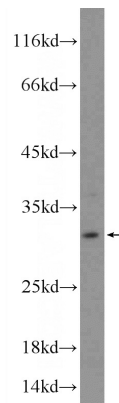
ELISA, WB

## Dilutions

Recommended Dilution:

WB: 1:200-1:2000

## Validations



HeLa cells were subjected to SDS PAGE followed by western blot with Catalog No:116062(TIP30 Antibody) at dilution of 1:600