

# THOC6 antibody

Catalog Number: 116049

## Product name

THOC6 antibody

## Specificity

human, mouse, rat; other species not tested.

## Antibody description

THOC6 Rabbit Polyclonal antibody. Positive WB detected in A431 cells, mouse ovary tissue. Positive IHC detected in human ovary tumor. Observed molecular weight by Western-blot: 35kd

## Preparation

This antibody was obtained by immunization of TH<sup>o</sup>C6 recombinant protein (Accession Number: NM\_001347703). Purification method: Antigen affinity purified.

## Formulation

PBS with 0.02% sodium azide and 50% glycerol pH 7.3.

## Storage

Store at -20°C. DO NOT ALIQUOT

## Clonality

Polyclonal

## Ig Type

Rabbit IgG

## Applications

ELISA, WB, IHC

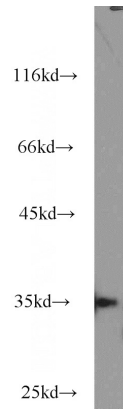
## Dilutions

Recommended Dilution:

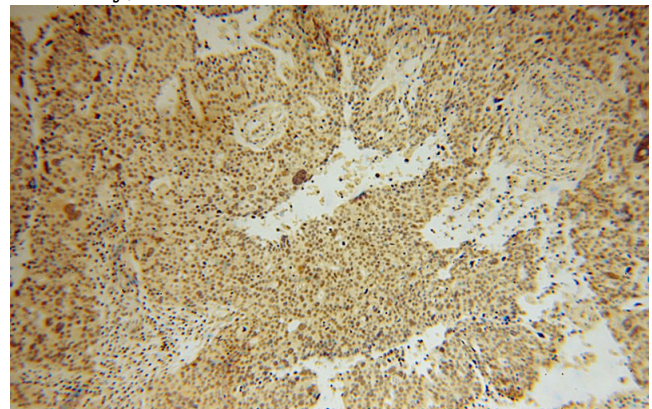
WB: 1:200-1:2000

IHC: 1:20-1:200

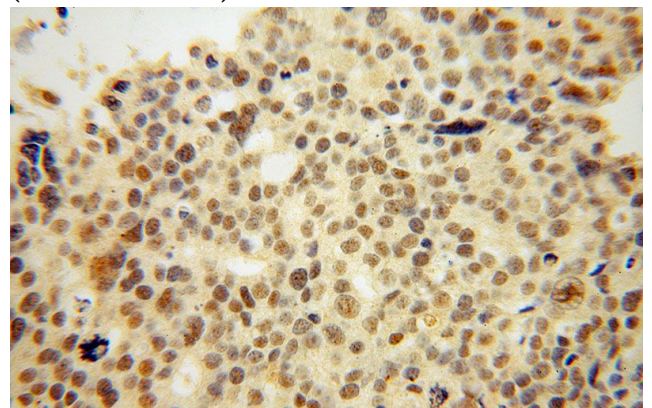
## Validations



A431 cells were subjected to SDS PAGE followed by western blot with Catalog No:116049(THoc6 antibody) at dilution of 1:500



Immunohistochemical of paraffin-embedded human ovary tumor using Catalog No:116049(THoc6 antibody) at dilution of 1:50 (under 10x lens)



Immunohistochemical of paraffin-embedded human ovary tumor using Catalog No:116049(THoc6 antibody) at dilution of 1:50 (under 40x lens)