

TGF-beta 1 antibody

Catalog Number: 116019

Product name

TGF-beta 1 antibody

Specificity

Human, Mouse, Rat; other species not tested.

Antibody description

TGF-beta 1 Rabbit Polyclonal antibody. Positive WB detected in MCF-7 cells, K-562 cells, mouse brain tissue, mouse uterus tissue, Raji cells. Positive IHC detected in human ovary tissue, human breast cancer tissue, human kidney tissue, human liver cancer tissue, human liver tissue, human lung cancer tissue, human lung tissue, human placenta tissue, human skin tissue, human spleen tissue, human testis tissue, rat ovary tissue. Observed molecular weight by Western blot: 25 kDa

Preparation

This antibody was obtained by immunization of Peptide (Accession Number: NM_000660). Purification method: Antigen affinity purified.

Formulation

PBS with 0.1% sodium azide and 50% glycerol pH 7.3.

Storage

Store at -20°C. DO NOT ALIQUOT

Clonality

Polyclonal

Ig Type

Rabbit IgG

Applications

ELISA, WB, IHC

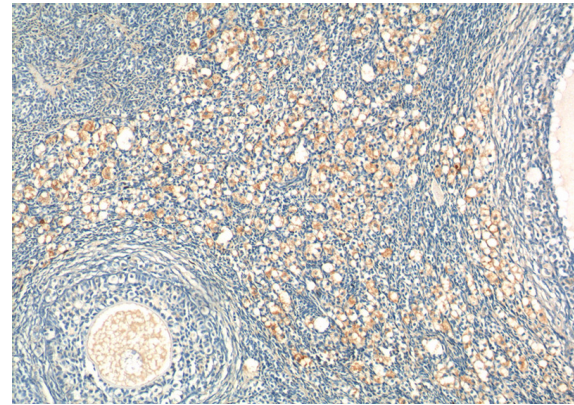
Dilutions

Recommended Dilution:

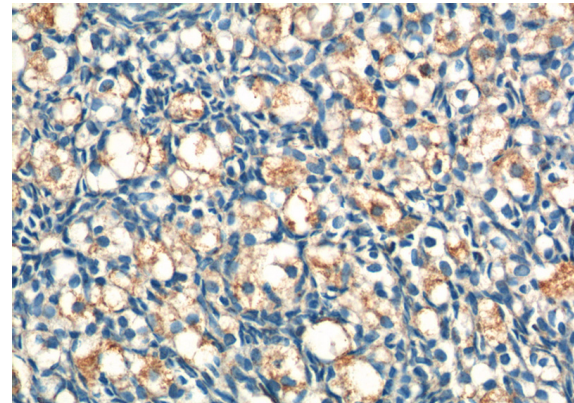
WB: 1:200-1:2000

IHC: 1:50-1:500

Validations



Immunohistochemistry of paraffin-embedded human ovary tissue slide using Catalog No:116019(TGFB1 Antibody) at dilution of 1:200 (under 10x lens).

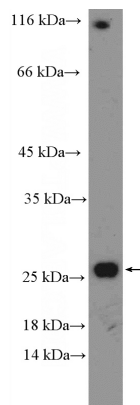


Immunohistochemistry of paraffin-embedded human ovary tissue slide using Catalog No:116019(TGFB1 Antibody) at dilution of 1:200

TGF-beta 1 antibody



Catalog Number: 116019



MCF-7 cells were subjected to SDS PAGE followed by western blot with Catalog No:116019(TGFB1 Antibody) at dilution of 1:600

(under 40x lens).