

# TELO2 antibody

Catalog Number: 115941

## Product name

TELO2 antibody

IP: 1:500-1:5000

IF: 1:10-1:100

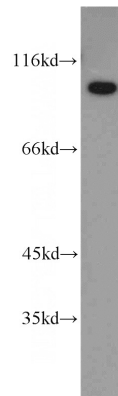
## Specificity

Human; other species not tested.

## Validations

## Antibody description

TELO2 Rabbit Polyclonal antibody. Positive IF detected in HepG2 cells. Positive IP detected in Y79 cells,. Positive WB detected in Y79 cells, A431 cells. Observed molecular weight by Western-blot: 92 kDa



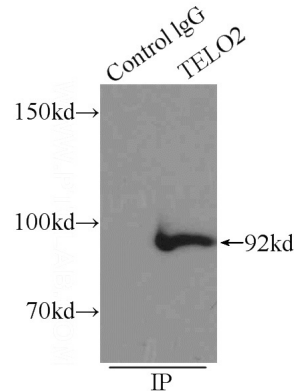
## Preparation

This antibody was obtained by immunization of TELO2 recombinant protein (Accession Number: XM\_047434987). Purification method: Antigen affinity purified.

Y79 cells were subjected to SDS PAGE followed by western blot with Catalog No:115941(TELO2 antibody) at dilution of 1:1500

## Formulation

PBS with 0.02% sodium azide and 50% glycerol pH 7.3.



## Storage

Store at -20°C. DO NOT ALIQUOT

IP Result of anti-TELO2 (IP:Catalog No:115941, 3ug; Detection:Catalog No:115941 1:1000) with

## Clonality

Polyclonal

## Ig Type

Rabbit IgG

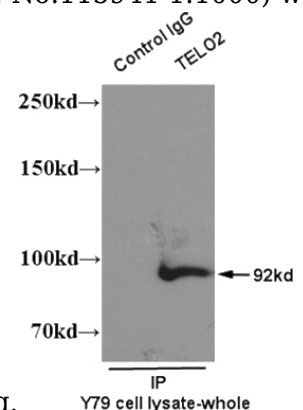
## Applications

ELISA, WB, IP, IF

## Dilutions

Recommended Dilution:

WB: 1:500-1:5000



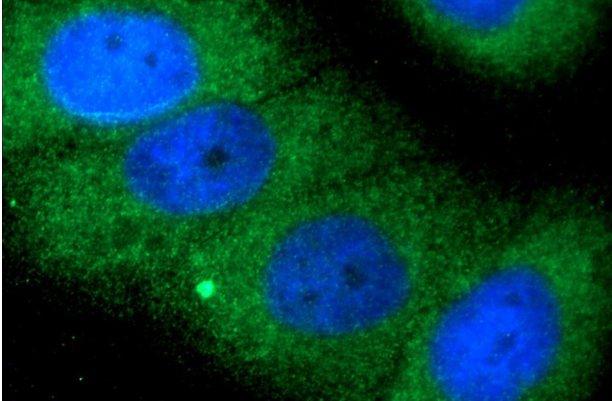
Y79 cells lysate 2000ug.

IP result of TELO2 antibody (Catalog No:115941 for IP and Detection) with Y79 cell lysate.

# TELO2 antibody

Catalog Number: 115941

---



Immunofluorescent analysis of HepG2 cells using Catalog No:115941(TELO2 Antibody) at dilution of 1:25 and Alexa Fluor 488-conjugated AffiniPure Goat Anti-Rabbit IgG(H+L)