

TBC1D23 antibody



Catalog Number: 115866

Product name

TBC1D23 antibody

WB: 1:500-1:5000

IP: 1:200-1:2000

Specificity

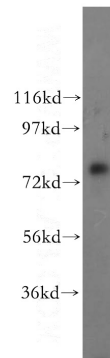
Human, Mouse, Rat; other species not tested.

IHC: 1:20-1:200

Antibody description

TBC1D23 Rabbit Polyclonal antibody. Positive IP detected in HepG2 cells. Positive WB detected in HepG2 cells, HeLa cells. Positive IHC detected in human liver tissue, human kidney tissue, human ovary tissue, human spleen tissue, human testis tissue. Observed molecular weight by Western-blot: 78 kDa

Validations



Preparation

This antibody was obtained by immunization of TBC1D23 recombinant protein (Accession Number: BC010221). Purification method: Antigen affinity purified.

HepG2 cells were subjected to SDS PAGE followed by western blot with Catalog No:115866(TBC1D23 antibody) at dilution of 1:500

Formulation

PBS with 0.02% sodium azide and 50% glycerol pH 7.3.

Storage

Store at -20°C. DO NOT ALIQUOT

Clonality

Polyclonal

Ig Type

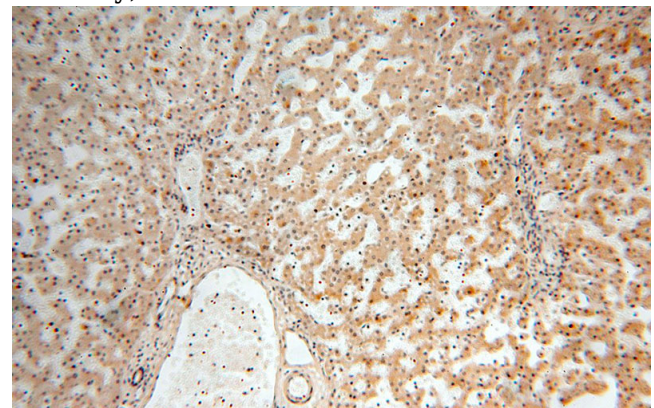
Rabbit IgG

Applications

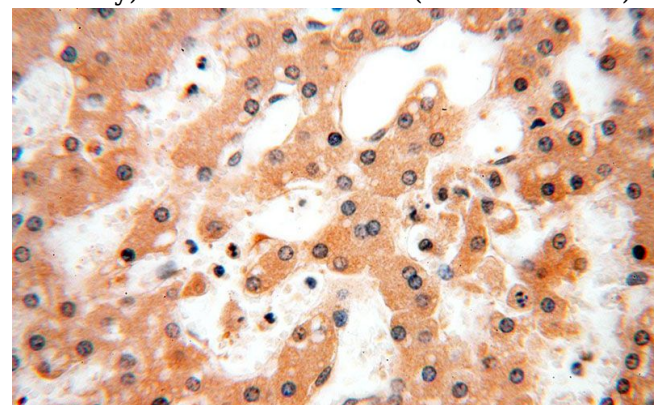
ELISA, WB, IHC, IP

Dilutions

Recommended Dilution:




Immunohistochemical of paraffin-embedded human liver using Catalog No:115866(TBC1D23 antibody) at dilution of 1:100 (under 10x lens)



TBC1D23 antibody



Catalog Number: 115866

Immunohistochemical of paraffin-embedded human liver using Catalog No:115866(TBC1D23 antibody) at dilution of 1:100 (under 40x lens) 

IP Result of anti-TBC1D23 (IP:Catalog No:115866, 4ug; Detection:Catalog No:115866 1:500) with HepG2 cells lysate 2400ug.