

# SULT1A3 antibody



Catalog Number: 115826

## Product name

SULT1A3 antibody

WB: 1:200-1:1000

IP: 1:200-1:1000

## Specificity

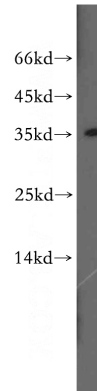
Human, Mouse; other species not tested.

IHC: 1:20-1:200

## Antibody description

SULT1A3 Rabbit Polyclonal antibody. Positive IHC detected in human hepat°Cirrhosis tissue, human breast cancer tissue. Positive WB detected in A549 cells, COLO 320 cells, mouse brain tissue, mouse colon tissue, mouse kidney tissue, mouse liver tissue. Positive IP detected in COLO 320 cells. Observed molecular weight by Western-blot: 34 kDa

## Validations



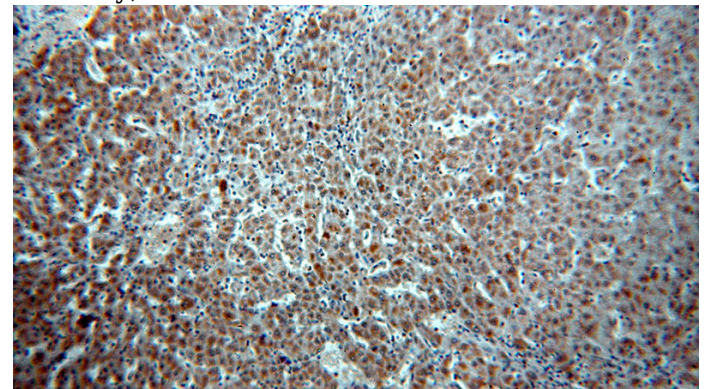
## Preparation

This antibody was obtained by immunization of Peptide (Accession Number: NM\_177552). Purification method: Antigen affinity purified.

A549 cells were subjected to SDS PAGE followed by western blot with Catalog No:115826(SULT1A3 antibody) at dilution of 1:200

## Formulation

PBS with 0.02% sodium azide and 50% glycerol pH 7.3.



## Storage

Store at -20°C. DO NOT ALIQUOT

## Clonality

Polyclonal

Immunohistochemical of paraffin-embedded human hepatocirrhosis using Catalog No:115826(SULT1A3 antibody) at dilution of 1:50 (under 10x lens)

## Ig Type

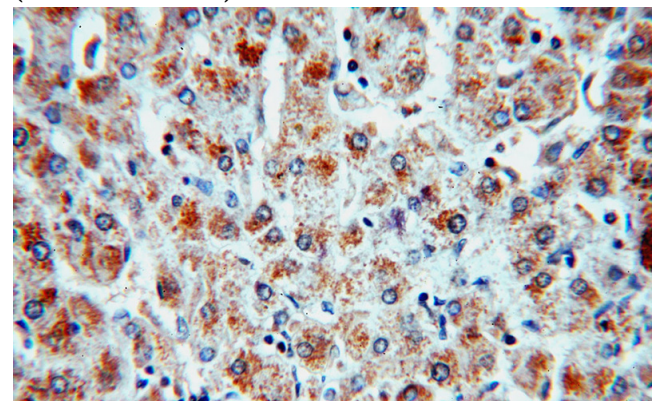
Rabbit IgG

## Applications

ELISA, WB, IHC, IP

## Dilutions

Recommended Dilution:



# SULT1A3 antibody

Catalog Number: 115826

---

Immunohistochemical of paraffin-embedded human hepatocirrhosis using Catalog No:115826(SULT1A3 antibody) at dilution of 1:50

IP Result of anti-SULT1A3 (IP:Catalog No:115826, 4ug; Detection:Catalog No:115826 1:200) with COLO 320 cells lysate 2240ug.

