

# SUCLA2 antibody



Catalog Number: 115818

## Product name

SUCLA2 antibody

Recommended Dilution:

WB: 1:500-1:5000

## Specificity

Human, Mouse, Rat; other species not tested.

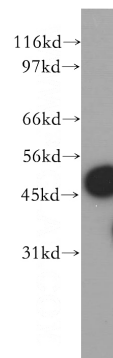
IP: 1:500-1:5000

IHC: 1:20-1:200

## Antibody description

SUCLA2 Rabbit Polyclonal antibody. Positive IHC detected in human colon cancer tissue, human heart tissue, human kidney tissue. Positive WB detected in PC-3 cells, HEK-293 cells, HepG2 cells, L02 cells, mouse brain tissue, mouse liver tissue, SH-SY5Y cells. Positive IP detected in HEK-293 cells. Observed molecular weight by Western-blot: 48-50 kDa

## Validations



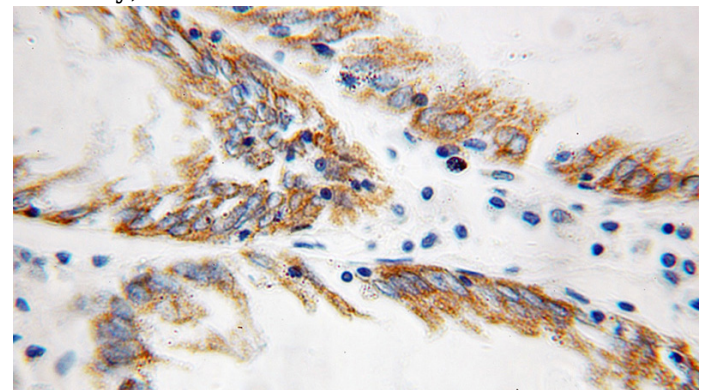
## Preparation

This antibody was obtained by immunization of SUCLA2 recombinant protein (Accession Number: NM\_003850). Purification method: Antigen affinity purified.

PC-3 cells were subjected to SDS PAGE followed by western blot with Catalog No:115818(SUCLA2 antibody) at dilution of 1:500

## Formulation

PBS with 0.1% sodium azide and 50% glycerol pH 7.3.



## Storage

Store at -20°C. DO NOT ALIQUOT

## Clonality

Polyclonal

## Ig Type

Rabbit IgG

## Applications

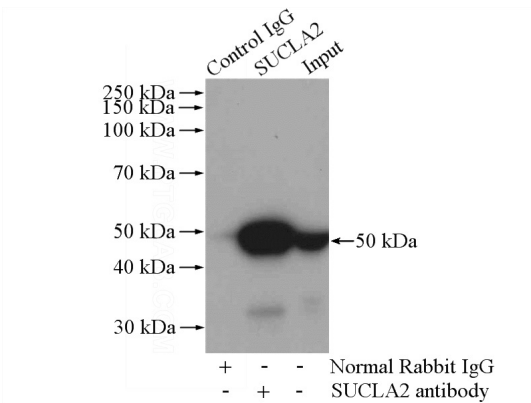
ELISA, WB, IHC, IP

Immunohistochemical of paraffin-embedded human colon cancer using Catalog No:115818(SUCLA2 antibody) at dilution of 1:100 (under 10x lens)

## Dilutions

# SUCLA2 antibody

Catalog Number: 115818



IP Result of anti-SUCLA2 (IP:Catalog No:115818, 4ug; Detection:Catalog No:115818 1:1000) with HEK-293 cells lysate 2800ug.