

SUB1 antibody

Catalog Number: 115817

Product name

SUB1 antibody

Specificity

Human, Mouse; other species not tested.

Antibody description

SUB1 Rabbit Polyclonal antibody. Positive WB detected in HeLa cells, rat liver tissue. Positive IHC detected in human gliomas tissue. Observed molecular weight by Western-blot: 18kd and 23-25kd

Preparation

This antibody was obtained by immunization of SUB1 recombinant protein (Accession Number: XM_017008987). Purification method: Antigen affinity purified.

Formulation

PBS with 0.1% sodium azide and 50% glycerol pH 7.3.

Storage

Store at -20°C. DO NOT ALIQUOT

Clonality

Polyclonal

Ig Type

Rabbit IgG

Applications

ELISA, WB, IHC

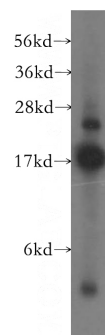
Dilutions

Recommended Dilution:

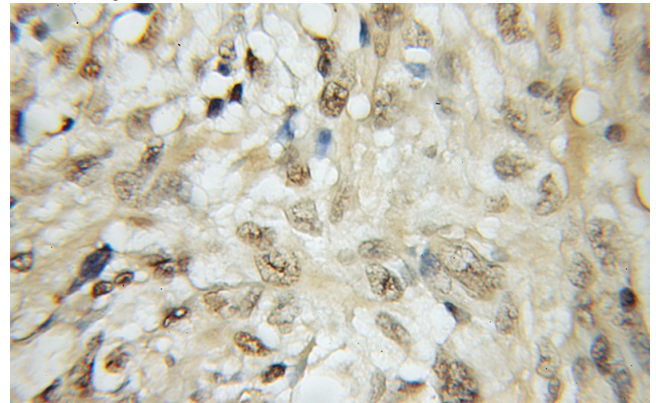
WB: 1:500-1:5000

IHC: 1:20-1:200

Validations



HeLa cells were subjected to SDS PAGE followed by western blot with Catalog No:115817(SUB1 antibody) at dilution of 1:500



Immunohistochemical of paraffin-embedded human gliomas using Catalog No:115817(SUB1 antibody) at dilution of 1:50 (under 10x lens)