

# Syntabulin antibody



Catalog Number: 115788

---

## Product name

Syntabulin antibody

## Specificity

Human, Mouse, Rat; other species not tested.

## Antibody description

Syntabulin Rabbit Polyclonal antibody. Positive WB detected in HeLa cells, MCF7 cells. Observed molecular weight by Western-blot: 90kd

## Preparation

This antibody was obtained by immunization of Syntabulin recombinant protein (Accession Number: NM\_001099746). Purification method: Antigen affinity purified.

## Formulation

PBS with 0.02% sodium azide and 50% glycerol pH 7.3.

## Storage

Store at -20°C. DO NOT ALIQUOT

## Clonality

Polyclonal

## Ig Type

Rabbit IgG

## Applications

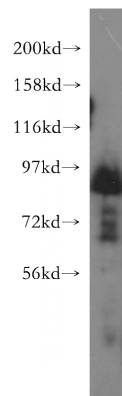
ELISA, WB

## Dilutions

Recommended Dilution:

WB: 1:500-1:5000

## Validations



HeLa cells were subjected to SDS PAGE followed by western blot with Catalog No:115788(GOLSYN antibody) at dilution of 1:500