

Symplekin antibody



Catalog Number: 115762

Product name

Symplekin antibody

IP: 1:200-1:2000

IHC: 1:20-1:200

Specificity

Human, Mouse, Rat; other species not tested.

Antibody description

Symplekin Rabbit Polyclonal antibody. Positive IHC detected in human testis tissue, human colon cancer tissue, human liver tissue, human placenta tissue. Positive IP detected in K-562 cells. Positive WB detected in K-562 cells, MCF7 cells. Observed molecular weight by Western-blot: 150 kDa

Preparation

This antibody was obtained by immunization of Symplekin recombinant protein (Accession Number: XM_047441752). Purification method: Antigen affinity purified.

Formulation

PBS with 0.1% sodium azide and 50% glycerol pH 7.3.

Storage

Store at -20°C. DO NOT ALIQUOT

Clonality

Polyclonal

Ig Type

Rabbit IgG

Applications

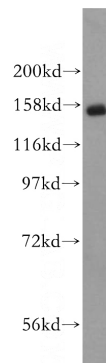
ELISA, WB, IHC, IP

Dilutions

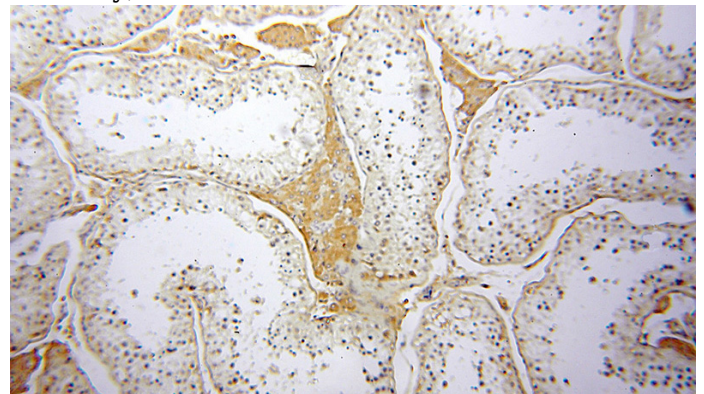
Recommended Dilution:

WB: 1:200-1:2000

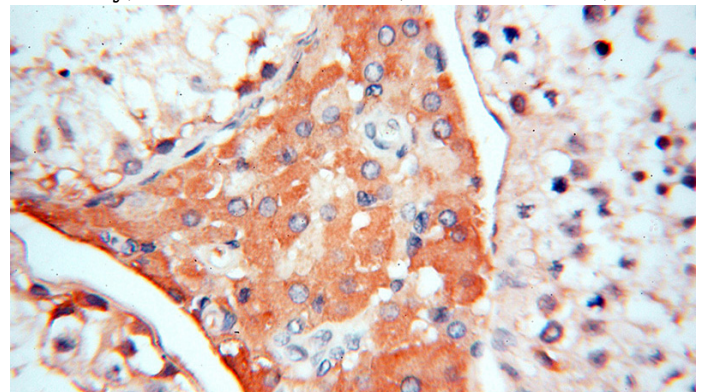
Validations



K-562 cells were subjected to SDS PAGE followed by western blot with Catalog No:115762(SYMPK antibody) at dilution of 1:500



Immunohistochemical of paraffin-embedded human testis using Catalog No:115762(SYMPK antibody) at dilution of 1:50 (under 10x lens)

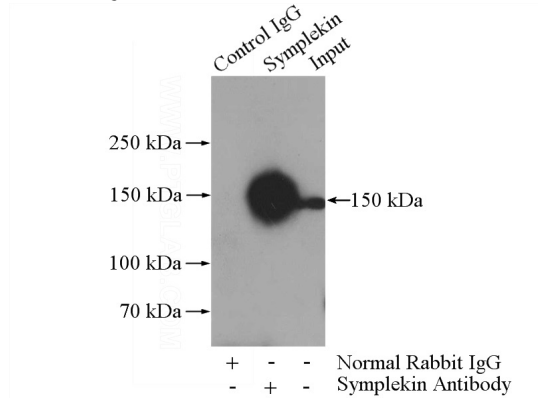


Immunohistochemical of paraffin-embedded human testis using Catalog No:115762(SYMPK

Symplekin antibody

Catalog Number: 115762

antibody) at dilution of 1:50 (under 40x lens)



IP Result of anti-SYMPK (IP:Catalog No:115762, 4ug; Detection:Catalog No:115762 1:500) with K-562 cells lysate 3600ug.