

# STAT4 antibody

Catalog Number: 115690

## Product name

STAT4 antibody

IHC: 1:20-1:200

IF: 1:20-1:200

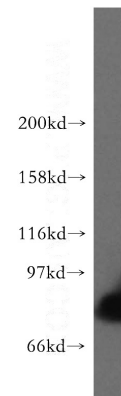
## Specificity

Human, Mouse, Rat; other species not tested.

## Validations

## Antibody description

STAT4 Rabbit Polyclonal antibody. Positive IHC detected in human cervical cancer tissue, human testis tissue, mouse testis tissue, rat testis tissue. Positive IF detected in HeLa cells. Positive WB detected in HeLa cells, K-562 cells. Observed molecular weight by Western-blot: 86 kDa



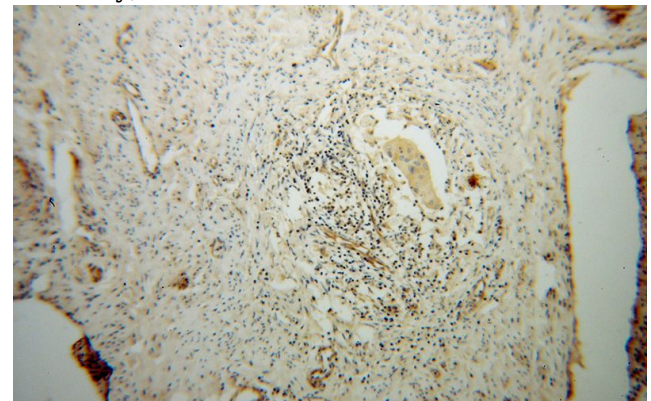
## Preparation

This antibody was obtained by immunization of Peptide (Accession Number: XM\_006712719). Purification method: Antigen affinity purified.

HeLa cells were subjected to SDS PAGE followed by western blot with Catalog No:115690(STAT4 antibody) at dilution of 1:1000

## Formulation

PBS with 0.02% sodium azide and 50% glycerol pH 7.3.



## Storage

Store at -20°C. DO NOT ALIQUOT

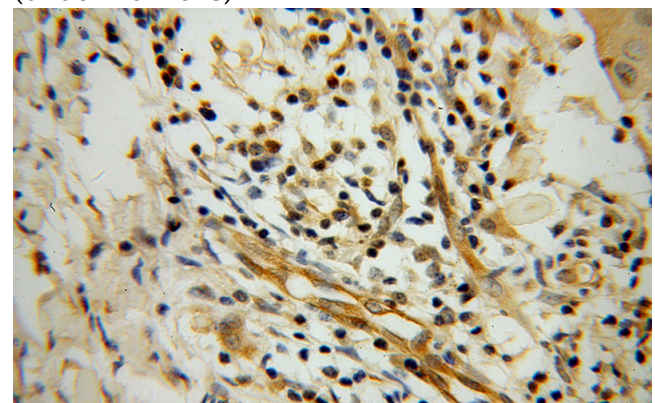
## Clonality

Polyclonal

Immunohistochemical of paraffin-embedded human cervical cancer using Catalog No:115690(STAT4 antibody) at dilution of 1:100 (under 10x lens)

## Ig Type

Rabbit IgG



## Applications

ELISA, WB, IHC, IF

## Dilutions

Recommended Dilution:

WB: 1:500-1:5000

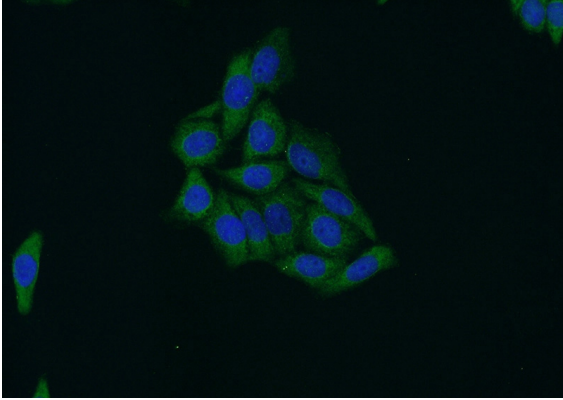
Immunohistochemical of paraffin-embedded

# STAT4 antibody

Catalog Number: 115690

---

human cervical cancer using Catalog  
No:115690(STAT4 antibody) at dilution of 1:100  
(under 40x lens)



Immunofluorescent analysis of HeLa cells using  
Catalog No:115690(STAT4 Antibody) at dilution of  
1:50 and Alexa Fluor 488-conjugated AffiniPure  
Goat Anti-Rabbit IgG(H+L)